

Sixth Form Prospectus

2017



Kettering Buccleuch Academy
The best in everyone™
Part of United Learning

Contents

Welcome	03
Introduction	04
Sixth Form Student Leadership Structure	05
An Overview	06
The Sixth Form Curriculum	07
Entry Requirements	11
A Summary of the Application Process	13
Careers and the Future	14
University Destinations	17
n Art and Design	20
O Business Studies	21
i Applied Business	22
t Biology	23
a Chemistry	24
m Children's Play, Learning and Development	25
f Computer Science	26
o Dance	27
r Drama and Theatre Studies	28
f Economics	29
o English Language and Literature	30
r English Literature	31
i Food Science and Nutrition	32
n Geography	33
f Health and Social Care	34
o History	35
r IT	36
i Law	37
n Applied Law	38
f Mathematics	39
o Further Mathematics	40
r Media Studies	41
i Music	42
n Music Technology	43
f Philosophy and Ethics	44
o Physical Education	45
r Physical Education (Cambridge Nationals)	46
i Physics	47
n Product Design	48
f Psychology	49
o Sociology	50
r Extended Project Qualification	51

Welcome

It is with great pride that I welcome you to our Sixth Form at Kettering Buccleuch Academy.

Kettering Buccleuch Academy offers a unique House System that underpins all of our core values, which in turn makes our academy a supportive, safe and exciting place to learn. This continues and thrives in the Sixth Form. The academy itself is a stunning building and we pride ourselves in the individually designed learning areas; we are particularly proud of our new careers area and encourage you to see this for yourselves!

Our Sixth Form has grown dramatically over the last two years with a significant number of students now joining us from schools in the surrounding area. As part of this continued expansion, we are excited to be offering a wider range of vocational courses than ever before, to include Applied Business, Applied Law, BTEC Performing Arts and many more.

Our priority to you as a student is to work with you as an individual to enable you to fulfil your full potential and develop self-confidence. You will be challenged daily to enable you to achieve.

When you join our Sixth Form you will be fully supported by a committed team of staff and your peers. With state of the art facilities and a dedicated corridor along with a common room and many study areas, you will be studying in a vibrant and dynamic environment. Recognising the importance of our students being fully informed in a fast changing world, we have a fabulous new television arriving shortly which will allow you access to current affairs programmes. The common room also has many magazines and periodicals available to develop your learning across subject areas such as science, geography and law.

As a Sixth Form student you will also benefit from a wide array of enrichment and development opportunities, including sporting activities, work experience, university trips and social events. You can expect excellent support with apprenticeship/job or UCAS applications, provided by specialist staff with proven success at helping students achieve places at Russell Group universities. Active involvement in our academic leadership and mentoring programme, working with different year groups within the academy, will help you to develop the skills and experience needed to support you in the future.

We very much hope you will see what we see every day and that we will be welcoming you to our Sixth Form in 2017 to study in our stunning environment.

Thank you,
Dino





Introduction

Some Sixth Forms are too much like school. Some colleges are too impersonal.

Here at Kettering Buccleuch Academy we offer the best of both worlds. Students have the freedom to express themselves as young adults, whilst still receiving all the support and guidance they were used to up to the age of sixteen. We have fantastic facilities at KBA which give Sixth Form students their own area but still allow them to access the support of the whole school community. Our House system is the foundation of all school life, ranging from pastoral care and support, extra-curricular activities and leadership opportunities and a range of Sixth Form and whole school inter-house competitions. Alongside the opportunities that the House system creates, we also personalise support to different types of Sixth Form learners at KBA. We aim to ensure all can access the appropriate next steps and provision to enable them to succeed and excel in the next part of their lifelong learning journey. Such opportunities include:

- Oxbridge residentials
- Mock interviews
- The EPQ qualification
- STEP paper preparation
- Leadership opportunities
- Villiers residentials
- University summer schools
- Duke of Edinburgh Award
- Complementary studies
- Deloitte work experience
- Russell Group University residentials
- Nuffield science residentials
- Navy work experience
- Sports Leaders Awards
- First aid courses
- Careers and apprenticeships guidance
- GCSE resit guidance and lessons

We realise that moving onto Sixth Form courses can be a daunting experience for students and their parents, but here at KBA we have well-established procedures that make the process as smooth as possible, whether you are joining us from another school, college or our own Year 11.

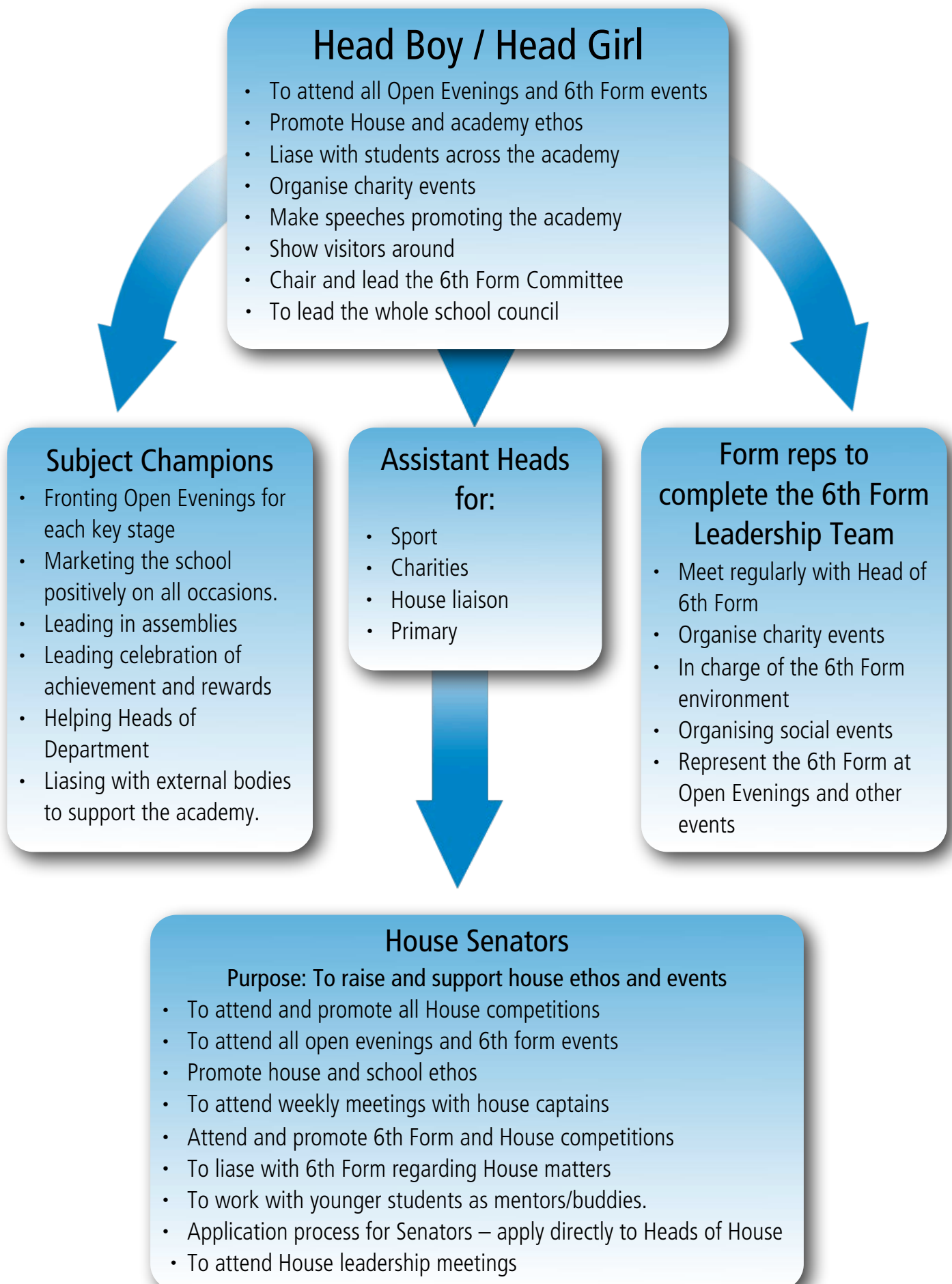
We are very proud of our Sixth Form students and invest significantly to give them the very best experience possible at KBA. Our dedicated teachers support our Sixth Form students both academically and pastorally. We know the aspirations of every student are different and our tutoring and pastoral systems will ensure that your individual needs are fully met. Our highly experienced team also ensures that each and every student has a wealth of opportunities available to them beyond the taught curriculum with numerous extra-curricular activities and leadership opportunities on offer. This ensures that students are fully prepared to apply for aspirational universities or jobs once they complete their Sixth Form studies here at KBA.

I look forward to welcoming you into the Sixth Form in September 2017. Until then, work hard to secure your target grades in your GCSE qualifications.

Miss Meg Kedie

Head of Sixth Form

Student Leadership Structure



An Overview

This is the prospectus for entry in September 2017 to the Sixth Form at Kettering Buccleuch Academy. In it you will find details about Sixth Form life and of all the courses that we are offering this coming academic year. Each year we review our curriculum offer to ensure that the courses that we offer suit our students.

Sixth Form Life

KBA is a friendly, lively environment with an ethos of hard work. Students are successful and often obtain A Level results higher than would be expected from their GCSE results.

We offer a high quality education together with support to enable the students to develop into independent, confident and responsible adults. Year on year we are increasing our range of courses in order to ensure we meet students' needs. Students are in small tutor groups enabling effective academic tutoring, individual support and guidance to ensure that they take full advantage of the rich educational and social opportunities on offer.

All our students receive support and extensive careers guidance which helps with a smoother transition into and beyond the sixth form. We have staff fully trained on the UCAS system and they will provide invaluable support for students who wish to apply to university.

Students are given many opportunities to make a contribution to the academy community through supporting in lessons across all areas of the academy, mentoring younger students, running extra-curricular clubs, leading House activities, being part of selection panels for recruitment and speaking at academy events, to name a few.

Sixth Form Dress Code

The sixth form dress code is smart casual. All clothing should be suitable for wearing in a school environment, maintaining modesty. We are keen to treat our sixth formers as the young adults they are and whilst we are very rigorous in our monitoring of their work we like to give them more freedom when it comes to expressing their personality through their appearance. However, shorts, sportswear, flip flops, crop or vest tops, short skirts, T shirts with inappropriate text or logos, excessive jewellery or make-up, are examples of dress that would not be suitable.

Facilities

Our academy offers you an inspiring place in which to learn. Students have their own wing which houses the Sixth Form common room and a Sixth Form staff team who are available to support and guide students. As well as the facilities of our award nominated building, ICT provision is embedded within teaching and learning with interactive whiteboards in every classroom and laboratories as well as fully equipped IT suites in every subject area. There are also suites of iPads and laptops available for use within many subject areas. Students do also bring their own laptops or tablets in and are able to access the wireless network.



Sixth Form Curriculum

This guide gives details on each of the courses we offer. Please read each one carefully so that you are sure that the courses you are choosing are right for you. In addition, below is some important information to include when making your choices.

Types of Course Offered

Throughout this guide we use the term 'Level 3 courses'. These include A Levels, NVQs and BTEC Diplomas. With the exception of GCSE resits, all the qualifications are Level 3.

The different types of courses on offer can have different methods of assessment: for example, all A and AS Levels are linear, with exams at the end of each course, whereas there is a portfolio aspect to the National Diploma in Sport. This information will be clearly stated on the subject guide pages.

A Level Reforms and 2017 Entry

In January 2013 the government announced some reforms to the structure of A Level subjects. The reforms have been phased in over a three year period and in 2017 the final A Levels will be reformed.

Level 3 equivalents such as BTEC and NVQ are not affected by these changes. BTECs and NVQs are a two year commitment. There is no AS or one year option within them.

The main change within the reform of A Levels is the 'decoupling' of the AS Level studied in Year 12 as distinct from the A2 Level completed in Year 13.

The new reformed A Levels detached the AS Level from the full A Level and they are assessed separately. The full A Level, which is linear, is a two year course assessed entirely at the end of the second year. AS is then a freestanding qualification which does not contribute to the A Level grade. However, the first year of A Level and the one year AS Level can be 'co-taught' so there will not be separate classes in Year 12 for the AS Level and the A Level, but where in the past any marks gained at AS Level contributed to the A2 mark in Year 13, the new A Level arrangement means that all of the first and second year material is assessed at the end of the second year – so if a student has also taken an AS Level in the same subject, they are being reassessed on the same material in Year 13. All students continuing their studies into A2 will be reexamined on all content again and their AS grade will not contribute to their final A2 grade. All students will take the AS exams at the end of Year 12 regardless of whether they intend to continue their studies into Year 13.



Vocational Courses:

These courses are mostly assessed through portfolio work with some subjects having assessment through examination. Vocational courses are related more to the 'world of work' and, as a student taking a course of this type, you will complete a portfolio of coursework tasks. Greater emphasis and responsibility is placed on self-reliance, independent research, time management, organisation skills and meeting of deadlines. Our BTEC in Sport is an example of a vocational based course.

Possible additional qualifications:

Extended Project Qualification

Timetables

Subjects are placed in 'blocks' with a range of subjects per block. Each of these blocks has five lessons per week. There are also a number of periods for independent study but the minimum timetabled commitment is 20 periods a week. A range of additional subjects are available to supplement the main subjects a student takes. Please see additional information below.

All students applying to do Level 3 qualifications (A Levels, BTEC Diplomas, NVQs) are expected to do at least three A Levels (e.g. three separate subjects or one double with one other subject as well), with higher ability students able to take up to four subjects at AS before moving on to complete three at A2 Level. Very able students may have the opportunity to continue with four A Levels in Year 13. This is at the discretion of the Sixth Form team and the Curriculum Deputy.

Additional Information

- Resit classes in GCSE Maths and English will be available to all students where necessary.
- Alongside the Level 3 courses, students will also complete activities in Complementary Studies, Global Learning, one or more enrichment opportunities, which includes working within the school community and potentially the Extended Project Qualification to keep students study as broad as possible within the confines of a school timetable.
- Good work ethic and attitude will be a factor in students being able to enrol on any Sixth Form course.
- AS subjects are one year in length. The minimum requirement to move onto A2 or to continue with A level in Year 13 will be three AS subjects at Grade D.
- Where a student is taking a vocational based course which is assessed through coursework, the units studied in Year 12 need to be completed to at least a pass standard by the June of Year 12.



Enrichment Courses

Our enrichment programme enables you to take part in a range of leisure and learning activities; clubs and work in the community that won't just help you stand out from the crowd when applying to university, but also let you have fun along the way. Activities take place at a range of different times appropriate to the nature of the activity.

Some examples of enrichment activities:

- Academic mentoring
- Numeracy and Literacy Champions
- Classroom Assistant in the Primary School
- EAL support
- Duke of Edinburgh Award
- Cooking on a budget
- University Residentials
- Sixth Form Sports

Why is enrichment important?

- It gives you a chance to broaden your experience and curriculum
- It shows universities and employers that you are a motivated student
- You can add your experience to your UCAS personal statement
- It demonstrates that you are an independent learner



What to do now if you are an existing KBA student:

Read through the subjects that are on offer. You may already have an idea about what subjects you might like to take. Read through the description to see if the course matches your expectations. Some subjects can have a different emphasis from their GCSE equivalent, for example a practical subject can be more 'academic' and involve more written work and research than your experience at GCSE level.

You will have heard from all the Heads of Departments through your assembly and Global Learning lessons and will have had an opportunity to discuss your future with a careers advisor. There is further opportunity to engage with the 'Prospects' service throughout the year. You will have an opportunity to talk to subject staff and Sixth Formers currently taking the subjects on Wednesday 9th November at the Sixth Form Open Evening. In making your choices it is important you consider which subjects you have strengths in, what your future career or university desires might be and which subjects you enjoy. Ask staff in your lessons about whether courses are appropriate for you.

After the Sixth Form open evening there will be a two week window to submit your application form for the Sixth Form. You will need to choose a subject from each block, following a pathway suitable for your future career plans. If there are any subject choices which "clash" please ensure you highlight this on your application form as some subjects will be moved where possible. In early December you will have an interview with one of the Sixth Form staff where you will have the opportunity to discuss your choices. There will also be taster sessions in January for new subjects which you haven't previously studied. Offer letters will come out in January and you will be invited to our summer induction days if your application is successful.

What to do now if you are interested in joining KBA from another school:

Read through the subjects that are on offer. You may already have an idea about what subjects you might like to take. Read through the description to see if the course matches your expectations. Some subjects can have a different emphasis from their GCSE equivalent, for example a practical subject can be more 'academic' and involve more written work and research than your experience at GCSE level.

Attend the 'Sixth Form Evening for Parents and Students' on Wednesday 9th November and talk to staff and current Sixth Form students about the subjects you are considering taking. Email staff with any additional questions or for further details. All staff email addresses are on the website. Complete an application form and return it by Friday 25th November.

What happens now?

All KBA Year 11 students will have a Connexions interview and an interview with a member of KBA staff to advise and guide them to make suitable choices. The predicted GCSE grades will be used as well as consultation with subject staff in considering the offer of a place in the Sixth Form. The offer will consist of the subject choices and the entry requirements that will need to be met. We will ask students to reply to the offer, via email, in person or by letter, and in accepting this offer they will make a commitment, should they come back to KBA, to begin the subjects offered in September providing the student meets the necessary entry requirements.

If a student wishes to change the subjects they take up this may be possible by negotiation but, unfortunately, it may not be possible as subjects have a maximum number of students for the course and may already be full.

If a student fails to meet the entry requirements each case will be considered individually and, in negotiation with subject staff, it is hoped that all students who wish to come to the Sixth Form will be found a suitable set of subjects or courses to follow.

Raising of the Participation Age

September 2013 was the first year in which Raising of the Participation age (RPA) came into force. This now means that students currently in Year 11 have to remain in either education or employment with training until 18. However this doesn't mean that students have to remain at KBA; there are local FE institutions and employment opportunities that include training as well as apprenticeships.

Our independent careers advisor will discuss the most appropriate route with students and KBA staff will give them an honest appraisal of the path they think would be most beneficial.

The Small Print

Please bear in mind that this prospectus contains information on the courses we are currently planning to offer in September 2017. Interest shown by students, uptake on courses in September, changes to staffing, funding, timetable, restrictions and other circumstances may mean that we may have to withdraw a course from those that are offered. If any changes that do take place affect you as a student please be assured that we will do our utmost to consult and involve you in those changes.

Final Comment...

We hope that you find this information useful and informative. Please ask staff any questions you may have relating to the individual courses or general sixth form information.

All the best for your studies in Year 11 and we hope to see you in the Sixth Form in September!



Entry Requirements

General Entry Requirements

The expectation is that students wishing to take A Levels or equivalent would have a five point GCSE score to include English Language and Maths *

AS/A2 – The academy entry requirement is a 5 point GCSE score to include English Language* and Maths* calculated as follows:

$$A^* = 8 \quad A = 7 \quad B = 6 \quad C = 5 \quad D = 4 \quad E = 3 \quad F = 2 \quad G = 1$$

Add the points from your GCSEs and divide by number taken.

**If a student achieves a high D in Maths or English Language this may be a possible route for them.*

Individual subjects also have their own minimum entry requirements which are aimed at ensuring students only take up a subject in which they are able to succeed at A Level. Students have to meet the general minimum entry requirements detailed above and the subject specific minimum entry requirements for the subject they wish to study.

In addition to the general and subject specific entry requirements, we also look at a student's effort grades during Year 11.

The minimum entry requirements are based upon our experience of previous students' achievements at Level 2 and 3 qualifications.

All Year 11 students will be interviewed in December following receipt of a report or reference with relevant predicted grades. During these interviews discussions will take place about the most suitable and appropriate courses and establishments for students at KBA.



Internal Entry Requirements

Physics	Grade B in two sciences at GCSE, a grade B in Maths GCSE and a grade C in English Language GCSE. This course is only available to students who have studied GCSE Science.
Chemistry	Grade B in 2 sciences at GCSE, a grade B in Maths GCSE and a grade C in English Language GCSE. This course is only available to students who have studied GCSE Science
Biology	Grade B in 2 sciences at GCSE, a GCSE grade C in English Language GCSE. This course is only available to students who have studied GCSE Science
Applied Science	Two C grades in sciences at GCSE
Psychology	Grade C in GCSE English Language and a grade C in a GCSE science subject. This course is only available to students who have studied GCSE Science
Health and Social Care	Grade C in GCSE English Language and a grade C in a GCSE science subject
Children's Play, Learning and Development	GCSE English Language grade C and GCSE Mathematics grade C. GCSE in Child Development is desirable but not essential
Mathematics	Grade B in GCSE Maths achieved in higher paper
Further Mathematics	A*/A in Higher GCSE Mathematics and taking Mathematics at A level
English Language and Literature	Grade C or above in English or English Language in the higher paper or a high level of performance in the foundation paper
English Literature	Grade C or above in English Language and English Literature in higher paper or a high level of performance in the foundation paper
Economics	Grade C or above in Maths and English
Applied Business	Grade C in English Language. If a student has studied Business at GCSE they will need to have achieved a grade C or above
Media Studies	Grade C or above in GCSE English Language and an aptitude for ICT
History	Grade C in English Language at GCSE. If a student has studied History at GCSE they will need to have achieved a grade C
Geography	Grade C in GCSE Geography and English Language
Sociology	A minimum of a grade C in English GCSE
Philosophy and Ethics	A minimum of a grade C in English GCSE
Music	Grade C or above at GCSE. Candidates must be having lessons on their chosen instrument; working at a Grade 5 level is very helpful.
Music Technology	GCSE grade C in Music. Candidates are expected to participate in Music Department activities, and particularly to support with technical requirements in performances and rehearsals.
Computer Science	GCSE Computing at grade C or higher, GCSE English at grade C or higher.
Information Technology	Grade C in English Language and a merit in the ICT OCR National course
Law	Grade C in GCSE English Language and a grade C at GCSE in History or Geography
Physical Education	You will have completed the BTEC 1st in Sport to a merit standard. GCSE English and Science at grade C or above
BTEC Sport Level 3	You will have completed the BTEC 1st in Sport to a merit standard. GCSE English and Science at grade C or above
French or German	Grade C or above in chosen language in GCSE higher paper
Art	GCSE Grade C or above in Art, alternatively proof of working at the same standard
Drama and Theatre Studies	It would be beneficial for students to have GCSE drama experience but the most important element is a passion for the study of performance, plays and practitioners. Grade C in GCSE English Language
Product Design (3D)	Grade C in GCSE Resistant Materials, Graphic Products or Electronic Products
Cookery	Food Technology GCSE at C or above is preferred although not essential
EPQ	At least 8 GCSEs at A*- C including English and Maths at B grade or above

The Application Process

A summary of the application process with the key dates for joining the Sixth Form at KBA is as follows:

October 2016	Thinking Ahead Programme takes place in Global Learning
9th November 2016	Sixth Form Open Evening for parents and students. Application forms distributed.
25th November 2016	Complete an application form and submit it by 25/11/16
8th and 9th December 2016	Student interviews take place during the school day. Offer letters will be sent out following the interviews.
January 2017	Taster sessions will take place 9.1.17– 19.1.17 after school from 3:15 – 4:15pm
29th and 30th June 2017	Sixth Form Induction Days
17th August 2017 9am	GCSE examination results. Students can confirm their place if they have the required grades and do not wish to change their courses. Students who wish to make changes to their course choices following results will need to have an interview with Sixth Form staff Students who have not previously applied and now wish to can enquire about places.
Monday 4th September	Registration morning for all Sixth Form students



Careers and the Future

Please bear in mind that certain degree subjects require specific A Levels to be studied. On the following pages there are some examples of degree courses which usually require specific A Levels.

If you have a specific university course in mind please ring the Admissions Tutors for that course as this will enable you to check their A/AS Level requirements. See Sixth Form staff for details of how to do this or access the UCAS website on www.ucas.com



SCIENCE DEGREE COURSES	
Degree Subject	A Level Requirement
Agriculture	Chemistry is usually essential and Maths or Physics or Biology are preferred
Bacteriology and Microbiology	Chemistry is required or preferred and 1 or 2 of Maths/Physics/Biology
Biochemistry	Chemistry if often required and one or two of Maths/Physics/Biology
Biology	Biology is essential. Chemistry is often required and Physics or Maths is useful
Botany	Chemistry and Biology are usually required and Physics or Maths is useful
Building	Maths and Physics are often preferred. Arts/Technology subjects are permissible
Chemical Engineering	Chemistry and Maths are usually required and Physics preferred
Chemistry & Polymer Science	Chemistry is usually required and Maths and/or Physics
Computer Science	Maths required or preferred by many universities but many courses accept a mixture of Arts and Sciences
Physics	Physics and usually Maths are required. Chemistry is useful
Electrical/Electronic Engineering	Physics and Maths are usually required. Chemistry is useful
Medicine	Chemistry essential and two of Maths/Physics/Biology preferred
Veterinary Science	Chemistry essential and two of Maths/Physics/Biology
Maths	Maths is essential and Further Maths is strongly advised

DEGREE COURSES ACCEPTING MIXED ARTS AND SCIENCE A LEVELS

Degree Subject	A Level Requirement
Archaeology	Most subjects acceptable
Architecture	Maths preferred by some Universities. Physics preferred by some; aptitude for Art desirable but no university requires 'A' level Art. Portfolio of work is often required. Design subjects can also be accepted.
Business Studies	Maths sometimes required
Economics	Maths preferred by some. 'A' level Economics not required
Geography	Geography essential; Geology / Biology / History / Language / Maths / Physics Chemistry / Economics useful
Law	Generally there are no subject requirements. English and History would be useful but Maths and Science subjects also welcomed.
Philosophy	Both Arts and Sciences equally acceptable. Maths and Foreign Languages useful.
Psychology	Generally there are no subject requirements. Mixture of Arts and Sciences acceptable for most courses. Some may require a science.
Sociology	Generally there are no subject requirements.
Surveying	Maths and Physics preferred
Town and Country Planning	Some may request Maths/Physics/Geography

ARTS DEGREE COURSES

Degree Subject	A Level Requirement
English	Most subjects acceptable. English usually required.
Fine Art (Art History)	Art an advantage but not essential, although a portfolio of work usually is
Diploma of Art & Design	Maths and English GCSE Grade C preferred. No specified 'A' Levels but a portfolio of work required. Foundation year usually required. 2 'A' Levels an advantage
French	French required
German	German required
Modern Languages	'A' Levels in two modern foreign languages preferred. One can be accepted.
History	History preferred.
Music	Music required
Politics	Most subjects acceptable; History / Economics / Maths / Foreign Language / English / Geography/ Law all supply useful background
Theology	Religious Studies not essential
Classics	Latin or Greek required for some courses

Pupils looking to take a degree subject which they have not studied at school often find the Extended Project Qualification a valuable opportunity to research that area in more depth. This is a worthwhile addition to an applicant's overall academic profile.

Medical and veterinary applicants are required to do a minimum period of work experience.

The most important requirement for all courses is good GCSE results/predictions in GCSE's, AS and A Level examinations.

Pupils will be interviewed for all courses at Oxford and Cambridge as well as for medical courses, art, drama, music, architecture, engineering and some courses at other universities, notably Manchester and Harper Adams.

Interviews and open days are held in the autumn and spring, and universities will make offers throughout the period from November – March, which are conditional upon A Level results. Universities have minimum A Level requirements which are published and which will form their "Standard offer" level. A conditional offer will require a pupil to achieve the standard offer level – regardless of that pupil's predictions (for example, Oxford will offer AAA for English even where an applicant is predicted A*A*A*).

Pupils should be aware that a growing number of courses are now requiring pupils to sit pre-tests. The results from these are used as part of the selection process.

- The Biomedical Admissions Test (BMAT) is required for Medicine, Bio-Medical and some Veterinary Science courses at Oxford, Cambridge, Imperial, UCL, Leeds, Brighton and Royal Veterinary College.
- The UK Clinical Admissions Test (UKCAT) is required by virtually all other schools of Medicine and Dentistry and is sometimes used aggressively in the selection process.
- The National Admissions Test for Law (LNAT) was required for Law at eight top institutions last year, namely, Birmingham, Bristol, Durham, Glasgow, KCL, Nottingham, Oxford, SOAS and UCL.
- Oxford University uses admissions tests for a large number of its courses.
- Some Cambridge colleges and Warwick require candidates to take STEP (Sixth Term Entrance Papers) for some subjects.



University Destinations

University	Course
Birmingham	History
London School of Economics	Maths
Southampton	History
Birmingham	Sport and Exercise Science
Liverpool	Business and management
Birmingham	Economics
East Anglia	History of Art with a year abroad
Sheffield Hallam	Education studies with Psychology and counselling
Edge Hill	Biology
De Montfort	Media production



University	Course
Bedford	Law
De Montford	Business management and Economics
Nottingham Trent	Computer science
De Montford	Psychology
Nottingham Trent	Psychology
Hull	Philosophy
Derby	Criminology



Hull	Human Geography
DeMontford	Criminology and Criminal justice
Nottingham Trent	Geography
Birmingham City	Early childhood studies
Nottingham Trent	Accounting and finance
Northampton	Social work



Subject Information



Art and Design

A LEVEL

Examination Board:
AQA

Specification:
Art and Design: Fine Art



What will I need before taking this course?

Students will need to have studied an art or design based course at GCSE level to grade C or above and have experienced working with different artistic media methods.

What will you do?

Fine art offers opportunities for students to use their creativity to express themselves. They will develop their understanding of creative processes, their ability to observe and to think, to solve problems and to communicate in a visual way. It will enable students to work independently and to make their own discoveries by exploring ideas, other artists' work and different materials and techniques.

Fine art AS and A-Level are practical courses in which students learn by doing, creating imaginative personal work. Students will explore a whole range of media, techniques and processes. They will develop their creativity and independent thought whilst learning to express themselves visually and letting their imaginations flourish. Fine art is a great companion to all other subjects as creativity, imagination and problem solving skills can greatly enhance your other subjects.

AS - Students will produce a portfolio of work that counts for 60% of their total marks. Students will also produce personal work in response to one of five exciting starting points, which will count for 40% of their total marks.

A2 - Students will develop work for a personal investigation into an idea, issue, concept or theme supported by written material. This will count for 60% of their total marks. Students will produce personal work in response to one of eight exciting starting points. This will count for 40% of their total marks.

Who is the course for?

Anyone with an interest in and a talent for art and/or design

AS Level		A2 Level	
Unit	Title	Unit	Title
1	Portfolio (60%)	3	Personal investigation (60%) includes 1000-3000 word essay
2	Externally set assignment (40%)	4	Externally set assignment (40%)

All students will sit a standalone AS qualification as part of preparation for the final A2 exam.

Assessment and Feedback

Students are involved with weekly group sessions, whereby learners discuss their practice and set targets. Students will have opportunities to discuss their work in progress during group critiques as well as 1:1 with their tutors. Termly self and teacher assessments take place using the assessment criteria.

Progression – What can I do at the end of the course?

Fine art AS and A-level builds on the skills, knowledge and understanding developed through study at GCSE. At the end of the A-Level course you will have the skills, knowledge and understanding needed for higher education.

Possible options include:

- Art foundation course
- Art, design, graphics, architecture, fashion, product design, media based degrees
- Apprenticeships
- Careers as a photographer, artist, designer, product designer, a role in the media or animation industries, gallery curator – endless possibilities.

Minimum Requirements

There are no minimum requirements but it is advantageous to have completed a creative course at GCSE to at least a grade C or above.

Business

A LEVEL

Examination Board:

AQA

Specification:

2131



What will I need before taking this course?

There is no requirement to have previously studied business at GCSE.

What will you do?

- Apply business concepts and theories in a range of contexts
- Analyse, explain and evaluate the strengths and weaknesses of different business situations
- Learn to evaluate arguments and evidence and make informed judgements

Business studies looks at different types of organisations that exist in various business sectors and environments. It will identify and investigate different internal and external business problems and behaviour. It will look at the role of businesses in the economy.

Who is the course for?

Anyone who is interested in understanding the way that businesses act, or who is considering a future career in business.

AS Level		A2 Level	
Unit	Title	Unit	Title
1	Planning and Financing a Business	3	Strategies for success
2	Managing a Business	4	The Business Environment and Managing Change

All students will sit a standalone AS qualification as part of preparation for the final A2 exam.

Assessment and Feedback

Assessment during the course will be based on data response exercises and essays. Feedback will be ongoing and will be written and verbal.

Progression – What can I do at the end of the course?

- This subject lays the foundation for further study of business or related subjects in higher education
- A wide range of careers including accountancy, business, management and self -employment
- An understanding of the way that businesses act
- Run your own business
- Administration and management of running almost any organisation you could imagine

Minimum Requirements

A minimum of 5 GCSEs at A* - C; to include a grade C or above in Maths and English.

Applied Business

BTEC LEVEL 3

Examination Board:

Edexcel

Specification:

BTEC Nationals



What will I need before taking this course?

You need to be good at working independently on tasks that are set and to be disciplined in your approach.

What will you do?

You will learn about business through practical experience from real world assignments. You will have to take responsibility for your own learning and work to a brief, managing your time efficiently to complete the different tasks.

The course is a one or two year course with assignments that you need to complete.

Who is the course for?

This is a vocational qualification and is for students who succeed through coursework rather than an exam focus. There are a range of assessments – both practical and written – to allow you to demonstrate your learning and achievement in different ways.



Certificate		Extended Certificate	
Unit	Title	Unit	Title
1	Exploring a business	3	Personal and Business Finance
2	Developing a marketing campaign		1 optional unit

Assessment and Feedback

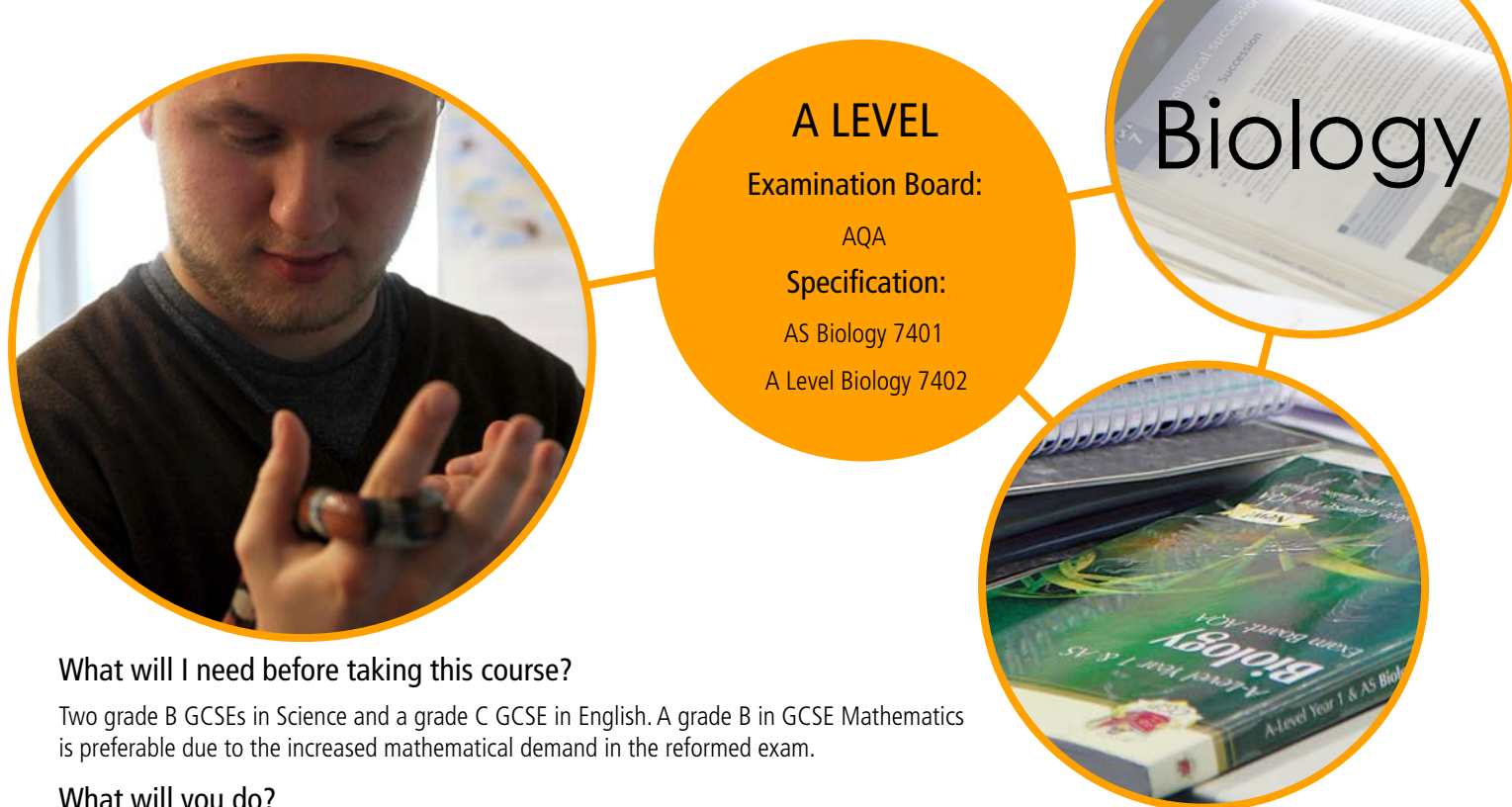
Due to the nature of the course, the teaching and learning will be skewed towards a more vocational element with a look into different businesses and how the theory relates to them.

Progression – What can I do at the end of the course?

This will allow you to pursue a career in business which has numerous different applications. It will showcase your ability to prepare for the real world of work.

Minimum Requirements

Due to the vocational nature of the course, we would need to look at each applicant on an individual basis to see if the course is suitable for them. A minimum of 5A* - C is essential.



A LEVEL

Examination Board:

AQA

Specification:

AS Biology 7401

A Level Biology 7402

Biology

What will I need before taking this course?

Two grade B GCSEs in Science and a grade C GCSE in English. A grade B in GCSE Mathematics is preferable due to the increased mathematical demand in the reformed exam.

What will you do?

A Level Biology is, at heart, a practical investigation based course. As much as possible you will “learn through doing” and will complete 12 core practical investigations which will be written up in your own lab book. You will become familiar with fundamental scientific ideas including how the heart and lungs work, how our DNA controls our body and the fine detail of photosynthesis and respiration.

Who is the course for?

This course has been designed by AQA in consultation with major universities so that it prepares students to progress onto prestigious university level Science courses.

AS Level		A2 Level	
Topic	Title	Topic	Title
1	Biological Molecules	5	Energy transfers in and between organisms
2	Cells	6	Organisms respond to changes in their internal and external environments
3	Organisms exchange substances with their environment	7	Genetics, populations, evolution and ecosystems
4	Genetic information, variation and relationships between organisms	8	The control of gene expression

All students will sit a standalone AS qualification as part of preparation for the final A2 exam.

Assessment and Feedback

Throughout each topic and at the conclusion of each topic you will be assessed using a range of accessible but rigorous methods. You will have access to regular interactive progress checks that will develop your exam technique. You will then complete an exam-style assessment at the end of each topic to provide you with a realistic picture of your progress towards your end of course exams.

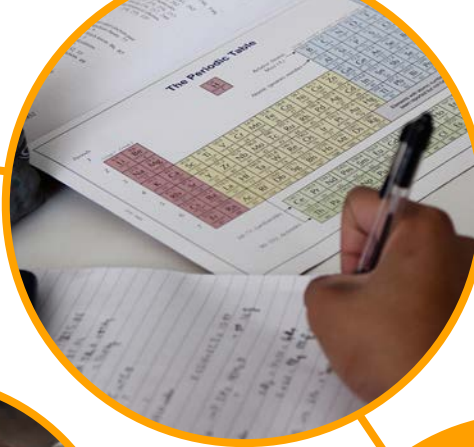
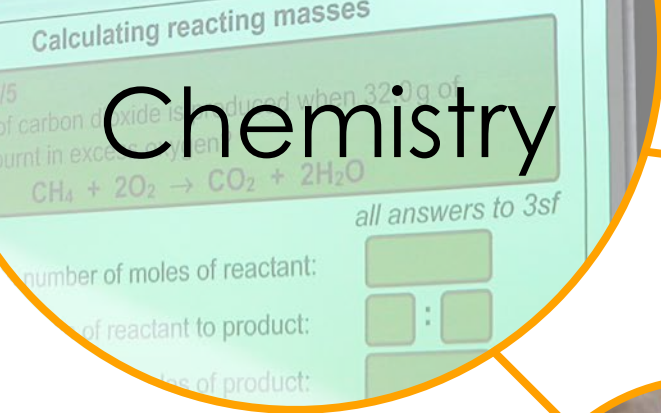
Feedback is given in writing and verbally and will be provided for all assessments. This is alongside regular marking of your classwork and learning conversations between teacher and student.

Progression – What can I do at the end of the course?

Upon completion of an A Level in Biology there are a number of options you can pursue. These include, but are not limited to, a degree within the Biological Sciences, Medicine, Pharmacy or other disciplines of science including Physics and Chemistry. An A Level in Biology is also a good foundation for a career in whichever field you choose – A Level Biologists are very sought after for their well-rounded skill set; choosing A Level will not close any doors to your future.

Minimum Requirements

To succeed on this course you will need two B grades in Science from either Double Award (Science A & Additional Science) or Triple Award Science (Science A, Additional Science & Further Additional Science). You will also need a C grade in English. A B grade in Maths is preferable as at least 10% of your exam marks will come from your mathematical skill.



What will I need before taking this course?

At least two grade B GCSEs in Science and a grade C GCSE in English. A grade B in GCSE Mathematics is preferable due to the increased mathematical demand in the reformed exam.

What will you do?

A Level Chemistry is a course heavily dependent on practical investigation. All of the key theories and fundamentals of Chemistry are related to practical investigation above and beyond the 12 core practical investigations which will be written up in your own lab book. You will become familiar with fundamental scientific concepts such as atomic structure and bonding, reaction energetics and thermodynamics, to more complex calculations based on acid base titrations and rates of reaction, interpretation of IR and mass spectrum data and organic chemistry.

Who is the course for?

This course has been designed by AQA in consultation with major universities so that it prepares students to progress onto prestigious university level Science courses. This course is perfect for anyone with a logical, methodical and inquisitive brain who would like to know more about how and why atoms and molecules behave as they do. Aspiring doctors, pharmacologists, research chemists, veterinarians and more are all welcome!

A LEVEL

Examination Board:
AQA

Specification:
AS Chemistry 7404
A-Level Chemistry 7405

AS Level		A2 Level	
Topic	Title	Topic	Title
3.1	Physical Chemistry	3.1	Physical Chemistry
3.2	Inorganic Chemistry	3.2	Inorganic Chemistry
3.3	Organic Chemistry	3.3	Organic Chemistry

All students will sit a standalone AS qualification as part of preparation for the final A2 exam.

Assessment and Feedback

Throughout each topic and at the conclusion of each topic you will be assessed using a range of accessible but rigorous methods. You will have access to regular interactive progress checks that will develop your exam technique. You will then complete an exam-style assessment at the end of each topic to provide you with a realistic picture of your progress towards your end of course exams. Feedback is given in writing and verbally and will be provided for all assessments. This is alongside regular marking of your classwork and learning conversations between teacher and student.

Progression – What can I do at the end of the course?

Upon completing an A Level Chemistry course there are a number of options open to you. These include, but are not limited to, a degree within the any of the Sciences, those with an interest in health and welfare may opt for Medicine, Veterinary, Pharmacology and those with a more analytical research mind may look at Chemical Engineering, research Chemistry or Pharmaceuticals. An A Level in Chemistry is also a good foundation for a career in whichever field you choose as A Level Chemists are highly sought after for their well-rounded skills and analytical mind set.

Minimum Requirements

To succeed on this course you will need two B grades in Science from either Double Award (Science A & Additional Science) or Triple Award Science (Science A, Additional Science & Further Additional Science). You will also need a C grade in English. A B grade in Maths is preferable as at least 10% of your exam marks will come from your mathematical skill.

Children's Play, Learning and Development

**BTEC
LEVEL 3**

Examination Board:
EDEXCEL

What will I need before taking this course?

An interest in spending time and working with children under the age of 8 is an absolute must as this course involves a 50 hour placement where you will be expected to take part in planning activities, engaging the children in them and evaluating them afterwards.

What will you do?

You will be preparing for an examination, carrying out a placement in a child care setting and producing a portfolio of work covering numerous areas related to the development and learning of children up to the age of 8 years old. The course covers various aspects of children's development including their physical, intellectual, emotional and social needs.

Who is the course for?

Students wishing to work directly with young children or progress into Higher Education to gain further qualifications within this area.

This is a two year course; units may be delivered in any order across the two years.

Unit	Title	Unit	Title
1	Child Development (Exam)	4	Health and Safety in Early Years Settings (Portfolio)
2	Play & Learning (Portfolio)	8	Safeguarding in Early Years (Portfolio)
3	Meeting Children's Physical Development, Physical Care and Health Needs (Portfolio)	9	Observation, Assessment & Planning (Portfolio)

The work covered in Year 12 forms 50% of the two year qualification.

Assessment and Feedback

- Portfolio: Students will receive verbal feedback every lesson. They will also receive written feedback on each piece of work handed in, with the opportunity to re-do an assessment if it doesn't meet either their or the assessor's requirements.
- Examination lessons: Students will receive written feedback on homework every week, formal assessment approximately every two to three weeks and verbal feedback every lesson.

Progression – What can I do at the end of the course?

- Direct entry into employment within Child Care.
- Further BTEC courses alongside employment.
- Degree courses e.g. Nursing, Primary Teaching or Early Childhood Studies.

Minimum Requirements

GCSE English Language grade C and GCSE Mathematics grade C.

A GCSE in Child Development is desirable but not essential.



A LEVEL

Examination Board:
OCR

Specification:
Computer Science H446

What will I need before taking this course?

Students will need to have completed GCSE Computing to level C or above, plus have a genuine interest in computer systems and programming them.

What will you do?

Computers are all-pervasive in modern life and computer science is the discipline that has made this possible. The Computer Science qualification will inspire and challenge students to apply the knowledge they gain, with the creative and technical skills they acquire. As well as learning how to program in both low and high level programming languages, the course provides the opportunity to learn about the structure of the processor, how programs are translated into the '1s' and '0s' that the processor can understand, database design, network infrastructure, modern web technologies and elements of law related to computer use.



Who is the course for?

OCR has developed the A Level Computer Science qualifications in consultation with teachers, employers and higher education to provide students with qualifications that are highly applicable to University courses and beyond.

AS Level		A2 Level	
Unit	Title	Unit	Title
01	Computer Systems	01	Computer Systems
02	Algorithms and Programming	02	Algorithms and Programming
		03	Programming Project

Assessment and Feedback

There are three units; an examined theory module (worth 40%) that deals with the workings of modern computers, programming languages, networking and Boolean algebra, as well as legal, moral and ethical issues; an examined programming module (worth 40%) that explores the student's understanding of computational thinking and algorithms and tests their problem solving skills; an internally assessed programming task (externally moderated, worth 20%) which challenges the learner to analyse, design, develop and then evaluate a solution to a problem.

Progression – What can I do at the end of the course?

Skills learnt in computing are highly applicable to university courses and beyond. The Russell Group's "Informed Choices" cite it as a "useful A Level" for 18 separate degree disciplines, including medicine, engineering, economics and mathematics.

Minimum Requirements

- GCSE computing at grade C or higher
- GCSE English at grade C or higher - there is a fairly high level of mathematics involved, including Boolean algebra and algorithms such as Google's Page Rank and Dijkstra's Shortest Path and how to measure the efficiency of algorithms using BigO notation.



What will I need before taking this course?

Individuals who dance outside of school or who have studied Dance in school with a Grade of C at GCSE.

What will you do?

Dance will be studied in a range of forums, techniques, styles and applications. Students will gain a thorough understanding of dance both practically and theoretically from choreographic awareness to anatomical understanding.

Who is the course for?

Anyone with a passion for dance!

Year 12 students with a passion for dance and a drive to further understanding for a range of dance.

AS Level		A2 Level	
Unit	Title	Unit	Title
1	Investigating Practitioners' work	2	Developing Skills and Technique for Live Performance
3	Group Performance Workshop	12	Contemporary Dance Technique

Units displaced over the two years depending on students and ability

The work covered in Year 12 forms 50% of the 2 year qualification.

Assessment and Feedback

Course work and assignment brief led

Practical led subject with supporting coursework where necessary

Progression – What can I do at the end of the course?

University, Performance, Stage school, Teaching, Choreographer, Dance Practitioner, Dance Therapist, Holistic Therapist.

Minimum Requirements

You must either study dance outside of school or have studied Dance in school with a Grade of C

Drama and Theatre Studies



What will I need before taking this course?

It is advisable that students wishing to take Drama and Theatre Studies will have a grade C or above in English. Students should be prepared to work in a team for performance activities, with all the responsibilities that that entails.

What will you do?

You would have chosen Drama and Theatre Studies at advanced level because you have an interest in how plays are brought to life in performance. You will gain skills and understanding as a performer, director, designer and an active audience member. In all these areas they will prove to be valuable and rewarding into the future. You will develop knowledge, understanding of how plays are written for the Theatre. You will physically explore through workshops two plays, which you will analyse. Two visits in the first term to the theatre to prepare you for the Live Theatre Evaluation. You will integrate theory and practice.

Who is the course for?

This course is for students who have a love of theatre, not only practical performance but an enjoyment of studying texts and discussing production elements. Ideally, students will have studied drama at GCSE level.

A LEVEL

Examination Board:

EDEXCEL

Specification:

GCE Drama and Theatre Studies
8DR01

AS Level		A2 Level	
Unit	Title	Unit	Title
1	Exploration of Drama and Theatre	3	Exploration of Dramatic performance
2	Text in Performance	4	Theatre Text in Context

Assessment and Feedback

Unit 1: You will be continuously assessed by teacher through practical and written tasks

Unit 2: Externally assessed

Unit 3: Internally assessed

Unit 4: Externally assessed through a written exam.

Progression – What can I do at the end of the course?

Whilst acting jobs are few and far between and often about luck, the skills nurtured within the two years allow students to acquire life skills that will have a huge impact in any career they choose. Drama and Theatre Studies will help you to become a more confident, creative and articulate communicator.

Minimum Requirements

English Language and Literature at grade C or above.

A LEVEL

Examination Board:

AQA

Specification:

7136



Economics

What will I need before taking this course?

You will need to have a good command of English and maths and have an interest in economic issues.

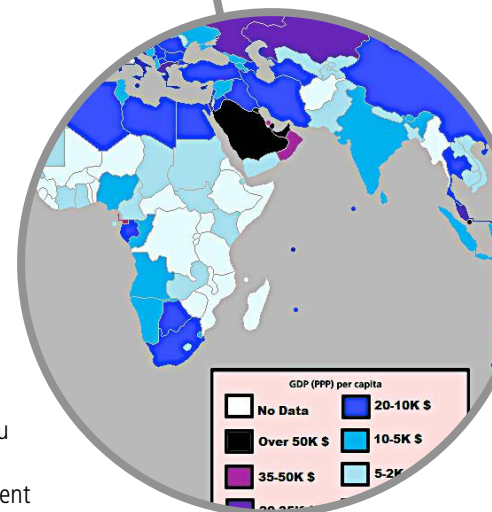
What will you do?

Economics is the study of economic concepts and theories through a consideration of economic issues, problems and institutions that affect everyday life. No prior knowledge of economics or business studies is needed.

At AS Level you will look at the operation of markets and market failure, understanding the economic problem, how prices are set, the market mechanism, market failure, government intervention and failure. You will learn about the national economy in a global context, understanding measurement of macroeconomic performance, demand and supply and government policy. For the full A Level you will also learn about different markets, income and the distribution of wealth and the international economy.

Who is the course for?

Anyone who is interested in how the economy works and current affairs.



AS Level		A2 Level	
Unit	Title	Unit	Title
1	Operation of Markets and Market Failure	1	Markets and Market Failure
2	The National Economy in a Global Context	2	The National and International Economy
		3	Economic Principles and Issues

All students will sit a standalone AS qualification as part of preparation for the final A2 exam.

Assessment and Feedback

Assessment is 100% examination

Assessment during the course will be based on multiple choice questions, data response exercises and essays. Feedback will be ongoing and will be written and verbal.

Progression – What can I do at the end of the course?

- This subject lays the foundation for further study of economics or related subjects in higher education
- A wide range of careers including local and national government, business, journalism and self-employment

Minimum Requirements

A minimum of 5 GCSEs at A*- C to include a grade B or above in maths and English.



English Language and Literature

What will I need before taking this course?

Students will need to have studied English Literature or Language at GCSE level to grade B or above and have a love of reading a range of texts and also be keen to communicate their opinions to others.

What will you do?

Designed with a focus on the integration of language and literature, these specifications enable students to see how linguistic and literary methods are related and to explore these links in their work.

The variety of assessment styles used, such as re-creative writing, commentary writing, discursive essays and research-based investigative writing, allows students to develop a wide range of skills. These include the ability to read critically, analyse, evaluate and undertake independent research, which are invaluable for both further study and future employment.

Who is the course for?

Students with a command of English who enjoy reading, analysing and discussing literature

A LEVEL

Examination Board:

AQA

Specification:

A 7706/7

AS Level		A2 Level	
Unit	Title	Unit	Title
1	Views and Voices - prose and poetry based including texts from the AQA Paris Anthology	3	Exploring Conflict - drama and creative writing
2	People and Places	4	Making Connections- Coursework Investigation 2500- 3000 word essay 20% Investigation into a chosen theme and text

All students will sit a standalone AS qualification as part of preparation for the final A2 exam.

Assessment and Feedback

AS assessed by 3 hr written exam (100 marks - 40% of A Level). A Level Paper 3 assessed by 2 1/2 hr written exam (100 marks - 40% of A level).

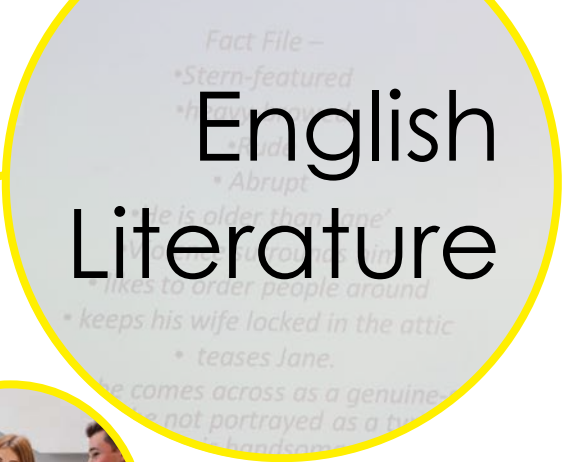
Students are assessed on:

- their verbal contributions in lessons
- presentations to the class
- notes and folder checks
- mock questions and past papers
- graded tasks with success criteria
- coursework drafts are marked and feedback given

Progression – What can I do at the end of the course?

University courses view the course very positively since many of the skills translate to any undergraduate degree course

- Journalism
- Media
- Publishing
- Management
- Theatre
- Writer
- Law



What will I need before taking this course?

Students will need to have studied English Literature or Language at GCSE level to grade B or above and have a love of reading a range of texts and also be keen to communicate their opinions to others.

What will you do?

Become a master of the study of literature through the lens of historicism, encouraging the independent study of a range of texts within a shared context, giving logic and meaning to the way that texts are grouped for study. The A-level non-exam assessment component provides opportunities for students to pursue your own areas of interest up to modern day whilst developing personal and independent critical skills.

Who is the course for?

Students with a command of English who enjoy reading, analysing and discussing literature

AS Level		A2 Level	
Unit	Title	Unit	Title
1	Love through the Ages: Shakespeare/Poetry	3	Texts in Shared Context: Modern Times: Literature from 1945 to the Present Day
2	Love through the Ages: Prose	4	Texts Across Time Coursework : Comparative critical study of two texts, at least one of which must have been written pre-1900. One extended essay (2500 words) and a bibliography

All students will sit a standalone AS qualification as part of preparation for the final A2 exam.

Assessment and Feedback

AS Units: Two written exams: 1 hour 30 minutes

- closed book
- 50 marks
- 50% of AS level

A Level Unit - Love through the Ages: Poetry and Drama

- Written exam: 3 hours
- open book in Section C only
- 75 marks
- 40% of A Level

Students are assessed on:

- their verbal contributions in lessons
- presentations to the class
- notes and folder checks

Progression – What can I do at the end of the course?

- Journalism
- Media
- Publishing
- Management

A Level Unit - Text in Shared Contexts

- Written exam: 2 1/2 hours
- open book
- 75 marks
- 40% of A-level

A Level Unit - Texts Across Time Coursework

- 50 marks
- 20% of A-level
- assessed by teachers
- moderated by AQA

- mock questions and past papers
- graded tasks with success criteria
- coursework drafts are marked and feedback given

- Theatre
- Writer
- Law

University courses view the course very positively since many of the skills translate to any undergraduate degree course.



Food Science and Nutrition



**LEVEL 3
DIPLOMA**
Examination Board:
WJEC
Specification:
QAN 601/4552/3



What will I need before taking this course?

At least 5 GCSEs at A* - C including at least a grade C in GCSE English. Students also need to have studied Food Technology GCSE or VCERTs Cookery and Nutrition in order to give them a good grounding in the subject area.

What will you do?

This course combines practical cookery sessions with the development of a broad understanding of the scientific principles behind food technology and nutrition.

Unit 1 will enable the learner to demonstrate an understanding of the science of food safety, nutrition and nutritional needs in a wide range of contexts, and through ongoing practical sessions, to gain practical skills to produce quality food items to meet the needs of individuals.

Unit 2 allows learners to develop their understanding of the science of food safety and hygiene; essential knowledge for anyone involved in food production in the home or wishing to work in the food industry. Again, practical sessions will support the gaining of theoretical knowledge and ensure learning is a tactile experience.

Studying one of the two optional units allows learners the opportunity to study subjects of particular interest or relevance to them, building on previous learning and experiences.

Unit		Assessment	Mandatory or Optional
1	Meeting the Nutritional Needs of Specific Groups	Internal and External	Mandatory
2	Ensuring Food is Safe to Eat	External	Mandatory
3	Experimenting to Solve Food Production	Internal	Optional
4	Current Issues in Food Science	External	Optional

Progression – What can I do at the end of the course?

An understanding of food science and nutrition is relevant to many industries and job roles. Care providers and nutritionists in hospitals use this knowledge, as do sports coaches and fitness instructors. Hotels and restaurants, food manufacturers and government agencies also use this understanding to develop menus, food products and policies that support healthy eating initiatives. Many employment opportunities within the field of food science and nutrition are available to graduates.

Minimum Requirements

At least 5 GCSEs at A* - C including at least a grade C in GCSE English.

Geography

A LEVEL

Examination Board:

AQA

Specification:

AS/A LEVEL GCE Geography
7037

What will I need before taking this course?

You will need to have a GCSE in Geography and an interest in the world around us.

What will you do?

There are four units over two years that look at analysing the interplay between humans and their surroundings. Geography students analyse the world around them and investigate modern day, real life case studies. In addition to this Geographers need to be able to carry out fieldwork.

Students will be taught how to interpret features, trends and patterns from a variety of geographical sources including: OS maps and thematic maps; maps presenting statistical data; data tables; photographs, aerial photographs and satellite and other images (including GIS); graphs; diagrams (flow charts, spider diagrams, sketch diagrams and maps); the results of statistical analysis.

Students are expected to develop an understanding of social and economic geography, develop an awareness and understanding of sustainable development and environmental issues and to consider our physical landscape.

Who is the course for?

The course is for anyone who has an interest in society, politics, the environment and the economy. Anyone who has an inquisitive nature who takes an interest in current affairs will find this course interesting. People of a scientific disposition will also enjoy the physical geography elements of the course.

AS Level		A2 Level	
Unit	Title	Unit	Title
1	Physical geography and people and the environment [50%]	3	Physical geography [40%]
2	Human geography and geography fieldwork investigation [50%]	4	Human geography [40%]
		5	Geographical investigation [20%]

All students will sit a standalone AS qualification as part of preparation for the final A2 exam.

Assessment and Feedback

Students will be regularly completing past papers and analysing marks schemes. The formal grade will come from exams based on each of the four units (two exams at the end of Year 12 and two at the end of Year 13) and from a geographical investigation which must include data collected in the field based on a question or issue.

Progression – What can I do at the end of the course?

The close link between the subject and the world around us makes for a long and varied list of related careers: for example, working with development or aid agencies; environmental work; using Geographical Information Systems; working for the census office and in tourism and recreation. This A Level can lead into degrees in Geography and related joint honours degrees along with Environmental Science. It is therefore a flexible A Level.

Minimum Requirements

Geography GCSE Grade C or higher

Health and Social Care



What will I need before taking this course?

A definite interest in working in either the Health, Social or Education sector with clients or people who have specific needs.

What will you do?

You will study four different topics covering sociological and psychological issues within the health and social care sector as well as careers and how practitioners within these sectors provide care and meet individual needs.

Who is the course for?

Students wishing to work directly within the Health or Social Care sector or progress into Higher Education to gain further qualifications within this area.

BTEC LEVEL 3

Examination Board:

EDEXCEL

Specification:

Extended Certificate in Health and Social Care

AS Level		A2 Level	
Unit	Title	Unit	Title
1	Human Lifespan Development	5	Meeting Individual Care and Support Needs
2	Working in Health and Social Care		One other optional unit

The work covered in Year 12 forms 50% of the two year qualification.

Assessment and Feedback

- Portfolio: Students will receive verbal feedback every lesson. They will also receive written feedback on each piece of work handed in, with the opportunity to re-do an assessment if it doesn't meet either their or the assessor's requirements.
- Examination lessons: Students will receive written feedback on homework every week, formal assessment approximately every two to three weeks and verbal feedback every lesson.

Progression – What can I do at the end of the course?

Direct entry into employment within the Health or Social Care sector..

Further BTEC courses or training alongside employment.

Degree courses.

Minimum Requirements

GCSE English Language grade C and GCSE Mathematics grade C.



A LEVEL
Examination Board:
 EDEXCEL
Specification:
 9H10



What will I need before taking this course?

A GCSE in History, an ability to discuss, debate and articulate views about events in history.

What will you do?

- Discussions and debates on different historical issues
- Reading and researching around different topics
- Graded tasks with given success criteria e.g. essay writing, individual/group presentations, role-play, debates
- Practice exam technique by looking at exam questions

Who is the course for?

- Anyone who loves finding out about the past and gets a ‘buzz’ when learning about people and societies in the past
- Someone who is prepared to do a lot of reading and writing in preparation for their lessons
- Someone who likes to think analytically and consider issues and controversies in depth
- Anyone who likes to argue their opinion and persuade people what they should believe

AS Level		A2 Level	
Unit	Title	Unit	Title
1	Britain, 1625-1701: conflict, revolution and settlement (30%)	3	Themes in breadth with aspects in depth - topic TBC (30%)
2	Russia in revolution, 1894-1924 (20%)	4	Coursework - topic TBC (20%)

All students will sit a standalone AS qualification as part of preparation for the final A2 exam.

Assessment and Feedback

- Unit 1 – Written examination: 2 hour and 15 minutes. Two essay questions and a source question.
- Unit 2 – Written examination: 1 hour and 30 minutes. One essay question and a source question.
- Unit 3 – Written examination: 2 hours and 15 minutes. Two essay questions and a source question.
- Unit 4 – Coursework: Two extended essays.

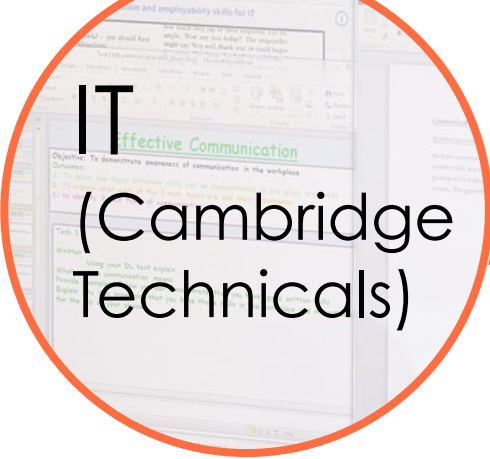
Progression – What can I do at the end of the course?

You could study and gain a degree/masters/PHD in History at university. Career opportunities can include archaeologist, archivist, historical researcher, museum work, teaching, tour guide, university lecturer, civil service, insurance and risk, intelligence work, law, library and information work, office management, publishing, politician. The opportunities with a history degree are endless...

Minimum Requirements

GCSE English Grade C or above.

GCSE History grade C or above would also be advantageous.



What will I need before taking this course?

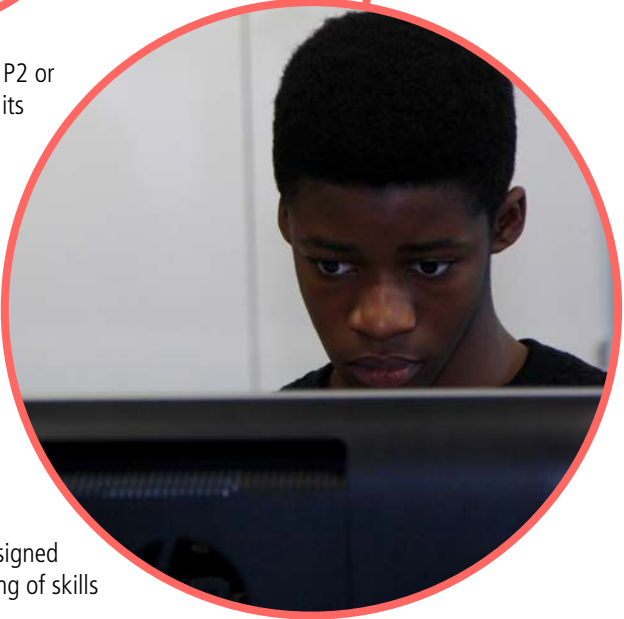
Students will need to have completed the OCR Cambridge Nationals qualification to level P2 or above, or the GCSE Computing to level C or above, plus have a genuine interest in IT and its role in organisations.

What will you do?

Cambridge Technicals are been designed to give you opportunities to demonstrate and develop the practical application of knowledge and understanding in the areas of work that appeal to you. This will enable you to develop your research skills as you work, both independently and with colleagues, to progress through your qualifications. There are four units of study: two in Y12, which are the mandatory units and a further two in Y13 which will be selected from a range of available units. In the two mandatory units, students will learn about the skills required to be an effective IT-based employee and the uses of data and information in organisations.

Who is the course for?

OCR have worked with universities to make sure the Level 3 Cambridge Technicals are designed to provide students with the depth and breadth of knowledge, as well as the understanding of skills required for further study in this subject area at university.



AS Level		A2 Level	
Unit	Title	Unit	Title
1	Communication and employability skills	3	Two further units are required, from a range of available units, covering topics such as maintaining computer systems, computer animation, spreadsheet modelling, web server scripting, digital graphics, developing programming solutions
2	Information Systems	4	

Assessment and Feedback

Students will receive feedback from their teachers to support their research skills and units of study to facilitate the highest marks.

Progression – What can I do at the end of the course?

Study for a degree in related subjects such as ICT, computer science, information systems, multimedia, software engineering, computer networking, e-business and information management.

Minimum Requirements

Grade C in English Language and a merit or above in the OCR National Course or equivalent.



A LEVEL
Examination Board:
 AQA
Specification:
 7162 GCE Law



What will I need before taking this course?

At least 5 GCSEs at A* - C including at least a grade C in GCSE English. Students also need an interest in current affairs, sound essay writing skills and to have fully researched what is involved in studying Law as a subject.

What will you do?

AS level consists of two units that provide a grounding in the main principles of English law covering its structure, personnel and functions. This includes juries, solicitors, barristers and judges and the civil and criminal legal process. Students also cover key principles of the criminal law eg assault and tort law eg the law of negligence.

At A2 level, the students will cover additional topics within the areas studied at AS level, e.g. murder and manslaughter, and will either study the key principles of the law of contract or human rights law.

Every unit at AS and A2 level is assessed by written examination. There is no coursework at either AS or A2 level.

Who is the course for?

Students who have a good standard of written English, who enjoy debate and problem solving and who have a keen interest in current affairs.

AS Level		A2 Level	
Unit	Title	Unit	Title
1	<ul style="list-style-type: none"> The nature of law and the English legal system Criminal law 	3	<ul style="list-style-type: none"> The nature of law and the English legal system Law of contract OR The nature of law and the English legal system Human rights
2	<ul style="list-style-type: none"> The nature of law and the English legal system Tort 		

Assessment and Feedback

Students will be assessed through end of topic tests and essays. Students will also take part in debates and give presentations on the material studied. Progress will be reviewed on a regular basis with targets set to guide improvement.

Progression – What can I do at the end of the course?

The course will introduce students to the career opportunities that the law itself has to offer from solicitors, barristers and legal executives. The subject is also relevant to a wide range of other careers including; business related careers, accountancy, journalism, the police, social work and the civil service. However, the relevance of studying law goes beyond entering a profession that includes elements of law. As a discipline requiring analysis, logic and problem solving, the skills developed will be useful in the context of most degree courses and many jobs. It will enable students to cope with legal situations encountered in the future. Through studying law, students will come to realise that there are no problems - only solutions!

Minimum Requirements

At least 5 GCSEs at A* - C including at least a grade C in GCSE English.

Applied Law

BTEC LEVEL 3

Examination Board:
EDEXCEL



What will I need before taking this course?

Students will need at least 5 GCSEs at A*- C. Students also need an interest in current affairs, good organisational skills and sound report writing and research skills.

What will you do?

Law involves analysing a wide range of issues and problems. It is a vibrant and exciting subject. It helps you to be self-confident in dealing with issues, disputes and other people. You will study specific areas of English law in detail and then some areas of the substantive law to include criminal, tort and family law. You will practice developing an argument through using supportive evidence and case law. Additionally, it will involve working as part of a team on group activities, conducting independent research and delivering presentations.

Who is the course for?

Students who are interested in studying law but prefer a more practical style of learning and a coursework based approach.

Certificate	Subsidiary Diploma
First Year (core modules)	Second Year
<ol style="list-style-type: none"> 1. Dispute Solving in the Legal System 2. Understanding Law Making 3. Aspects of Legal Liability 	<ol style="list-style-type: none"> 1. Unlawful Homicide and Police Powers 2. Aspects of the Law of Tort 3. Aspects of Family Law

The work covered in Year 12 forms 50% of the 2 year qualification.

Assessment and Feedback

There are no exams and all work is assessed internally and then externally moderated. Students develop their skills through practical sessions, group and personal tutorials. The course will involve a mix of practical and theory lessons. Practical lessons will consist of role plays, presentations and relating theory to practice by using visits, guest speakers and your own research.

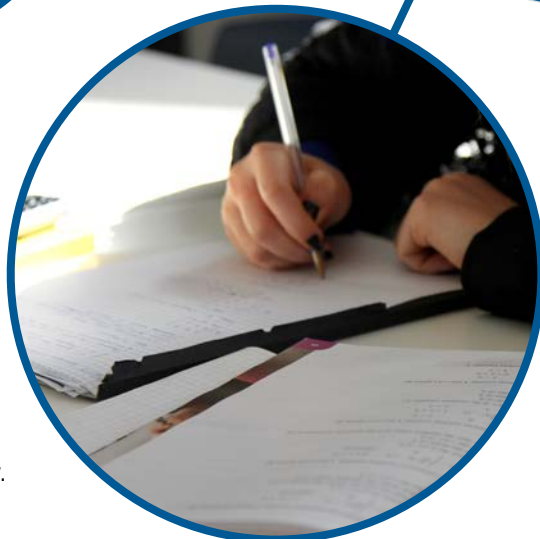
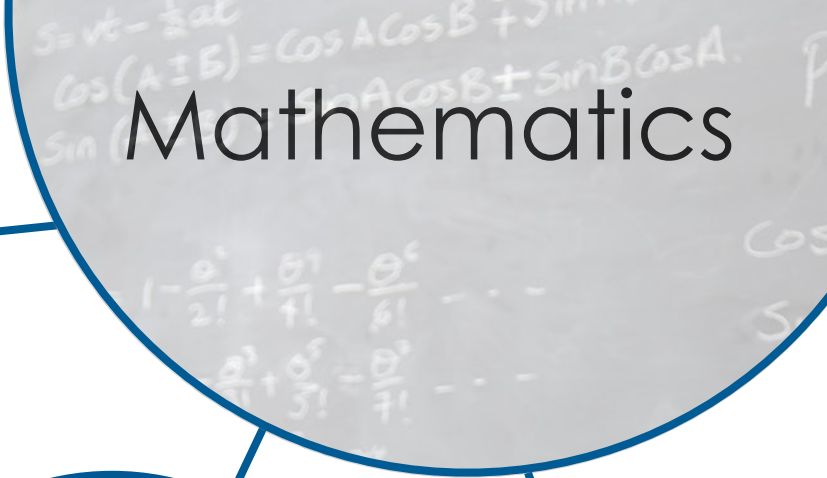
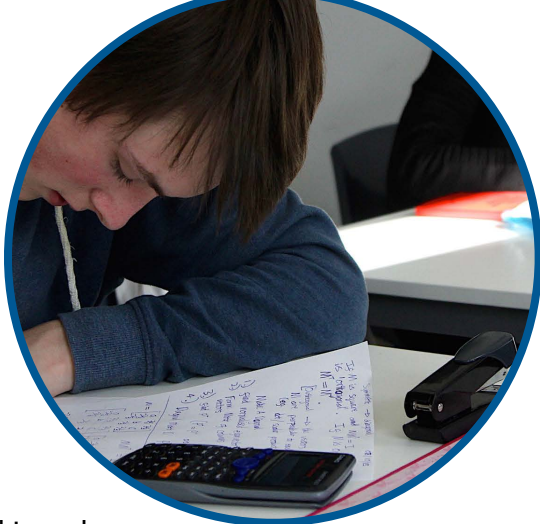
Students will be continually assessed throughout the course by a range of methods these will include practical observations, presentations, group and individual work, written assignments and some controlled assessment

Progression – What can I do at the end of the course?

As well as a career in law, accountancy, journalism, marketing, public relations, social work, teaching, business and government are all careers that utilise the skills and knowledge that the subject provides. It will allow you to progress to a Degree course or seek employment as a Trainee Professional.

Minimum Requirements

At least 5 GCSEs at A*- C



A LEVEL
 Examination Board:
 EDEXCEL
 Specification:
 8371

What will I need before taking this course?

A B or above at GCSE Maths and an interest in working logically and solving problems.

What will you do?

Maths is a requirement for many jobs and courses. The CBI predicts that, by 2014, the UK will need an extra 730,000 people with maths, science, technology and engineering qualifications and those people with A Level Maths earn on average 10% more than those without. Students will be analysing, communicating and investigating problems both in teams and independently. Problem solving is at the heart of A Level Mathematics.

Who is the course for?

Students who wish to progress with Mathematics, Sciences, Engineering and many other career choices. It is for students who enjoy a commitment to hard work and have an interest in working logically, problem solving and algebraic manipulation.

AS Level		A2 Level	
Unit	Title	Unit	Title
1	Pure mathematics paper including topics such as calculus, algebraic manipulation, trigonometry and geometry (100 marks)	3	Two pure papers aligned with the AS pure paper content but assessed at A level standard (100 marks each)
2	Statistics and Mechanics paper including data presentation and interpretation and use of technology in Kinematics, Newton's laws and statics. (50 marks)	4	Statistics and Mechanics paper aligned with content of the AS paper but assessed at A level standard. (100 marks)

All students will sit a standalone AS qualification as part of preparation for the final A2 exam.

Assessment and Feedback

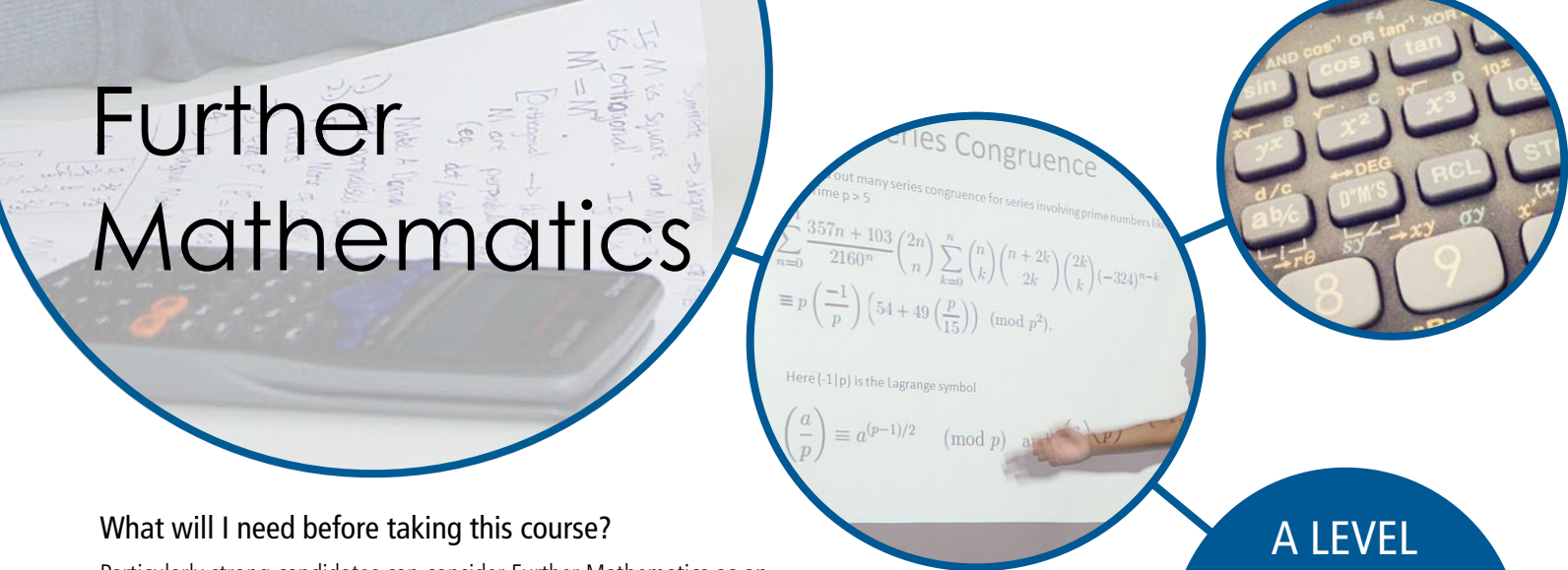
There will be at least two long homework assignments per week to assess progress and understanding. There will be termly mock papers and practice exam questions.

Progression – What can I do at the end of the course?

The study of maths can lead to a variety of exciting professional careers: research, law, commerce, teaching, medicine, engineering, finance, Business and government service to list a few.

Minimum Requirements

GCSE mathematics minimum Grade B
 (Higher tier exam and higher teaching set for both Years 10 & 11)



Further Mathematics

What will I need before taking this course?

Particularly strong candidates can consider Further Mathematics as an **addition** to Mathematics A Level. The course is particularly demanding of time and effort. A thorough knowledge of Higher level GCSE work is assumed and therefore candidates should have achieved grade A* in GCSE maths. You need to have an interest in working logically and problem solving and it works really well along with physics.

What will you do?

Students will acquire knowledge and skills and the ability to apply mathematics and recognise its significance to other disciplines. Students will experience mathematical activity, develop resourcefulness in solving problems and improve understanding of mathematical reasoning.

Who is the course for?

Students who wish to progress with Mathematics, Sciences, Engineering and many other career choices. It is for students who enjoy a commitment to hard work and have an interest in working logically, problem solving and algebraic manipulation.

A LEVEL
 Examination Board:
 EDEXCEL
 Specification:
 8610

AS Level		A2 Level	
Unit	Title	Unit	Title
1	Further Pure 1: Differential equations, Integration, numerical methods, Imaginary/Complex Numbers	4	Further Pure 2
2	Mechanics 1: SUVAT and Projectiles. Forces and Centre of Gravity.	5	Decision 1
3	Mechanics 2: Momentum, impacts, rocket speeds, stability and conservation of energy. Relative Velocity, Harmonic Motion and Stability	6	Mechanics 3/ Further Pure 3

Assessment and Feedback

Assessment is carried out throughout the year, termly with mock papers and practice exam questions with ongoing feedback.

Progression – What can I do at the end of the course?

Further Mathematics is particularly useful for students moving on to degree courses with a large mathematical content. However, some students are simply interested in the course in its own right.

Have you considered?

- Mathematics in security: Keeping one step ahead of the hackers, giving airport x-rays a new direction.
- Mathematics in the environment: Better weather forecasting, better conservation management.
- Mathematics of finance and economics: Buy! Sell! Maths on the stock market, How to take a better risk?
- Mathematics in the industry: A matter of survival, keeping the customer happy.

Minimum Requirements

A*-A in Higher GCSE Mathematics and taking A Level Mathematics in Year 12 and 13.

A LEVEL

Examination Board:

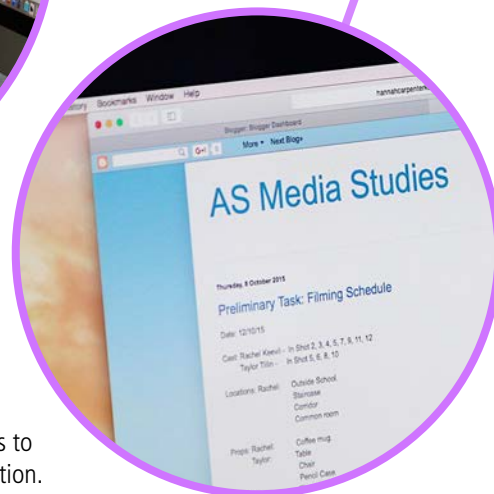
OCR

Specification:

H009/H409



Media



What will I need before taking this course?

At least 5 GCSEs at A* - C including at least a grade C in GCSE English. It is not necessary to have studied GCSE Media Studies.

What will you do?

At AS level students explore how the media language of media products construct different representations and how media products are used by institutions to communicate messages to different audiences. This element of the course is assessed through a single 2 hour examination. Students are also asked to practically explore the creation of a television advertisement for the non-exam assessed element of the AS course.

At A2 level students explore how media products are used by institutions to construct different representations and how media audiences interpret these products. Learners will explore and analyse the ideas and arguments from debates about the media. These debates will be drawn from a) a historical perspective b) the digital age and c) global media. Students will practically explore the creation of three linked media products in a cross-media production for the non-exam assessed element of the A2 course.

Who is the course for?

This course is for students who have an interest in the media (television, film, newspapers, radio, etc), sound essay writing skills, an aptitude for using technology and the ability to perform well under the pressure of a fast-paced working environment.

AS Unit		A2 Unit	
Title	Assessment	Title	Assessment
Key Media Concepts	Exam - 2 hours 70% of AS grade	Media Products	Exam - 1 hour 45 minutes 30% of A2 grade
Foundation Portfolio in Media Studies	Non-Exam Assessment 30% of AS grade	Media in the Digital Age	Exam - 2 hours 40% of the A2 grade
		Making Media	Non-Exam Assessment 30% of the A2 grade

Assessment and Feedback

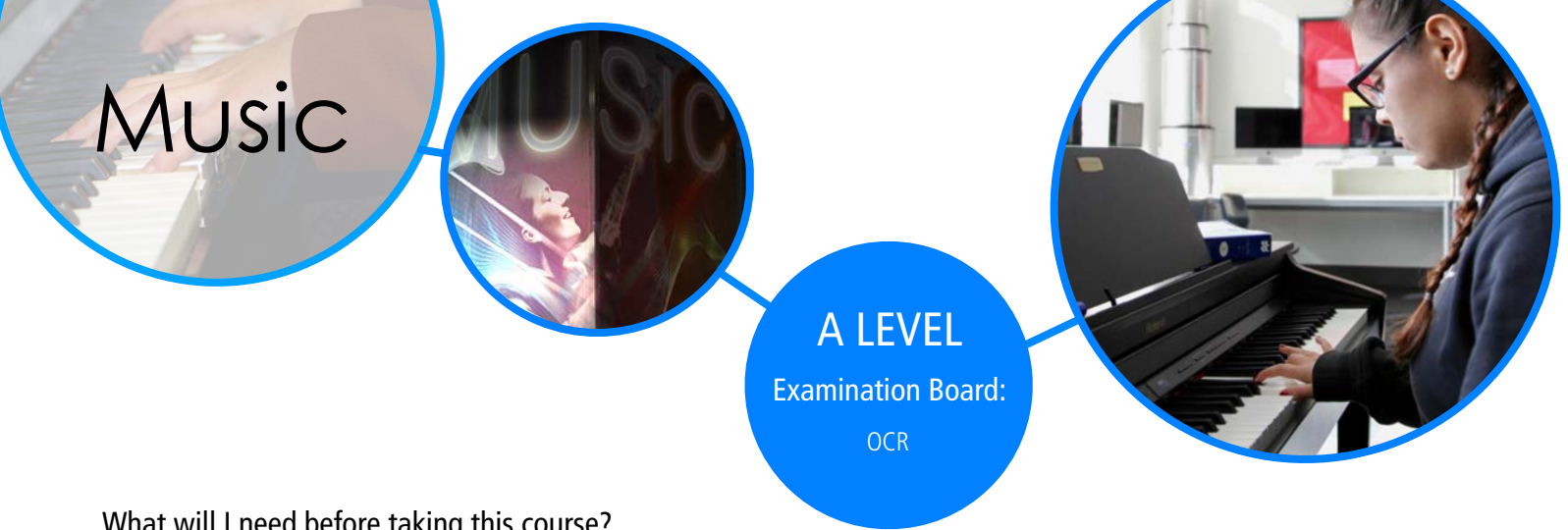
The subject is formally assessed through exam and non-exam units and requires excellent literacy skills. Students are assessed in lessons through verbal contributions, presentations, quality of research, past exam questions in the form of essay responses and end of unit tests.

Progression – What can I do at the end of the course?

An A-Level in media studies will not get you a job in the media, no more than an A-level in maths will get you a job as a mathematician. However, it is an excellent introduction, not only to the concepts, but more importantly to the skills needed to work in the media. Media Studies is not a traditional academic subject but it is a subject for the modern world and it tests a variety of skills. You would have to study two or three A-levels to test the number of skills found in media studies, and these are skills for life.

Minimum Requirements

At least 5 GCSEs at A* - C including at least a grade C in GCSE English.



What will I need before taking this course?

An interest in a range of musical styles and an ability to play a musical instrument to at least grade 4 standard or sequence effectively.

What will you do?

You will be working as a practical musician within your class to enhance your performance, composition, and listening skills. You will develop a deeper understanding of the theory of music by studying set works in which they are applied.

Who is the course for?

Anyone who has a keen interest in creating and listening to different styles of music, alongside some pre-existing skills and knowledge, and who wishes to broaden their experience and deepen their understanding of live and recorded music would be suitable for this course.

AS Level		A2 Level	
Unit	Title	Unit	Title
1	Unit 1: Performance (30%): In this unit you develop your skills as a performer through delivery of a performance of over six minutes.	4	Unit 4: Performance (25-35% options): This unit gives students the opportunities to extend their performance skills by delivering a recital as soloists and/or as part of an ensemble.
2	Unit 2: Composition (30%): In this unit you develop your skills by composing a minimum of two pieces.	5	Unit 5: Composition (25-35% options): The compulsory element is for two pieces with a minimum duration of 4 minutes.
3	Unit 3: Composition (40%): In this unit you develop your skills by composing a minimum of two pieces.	6	Unit 6: Further Musical Understanding (40%): This unit focuses on listening to music, familiar and unfamiliar and understanding how it works.

Students will sit a standalone AS Level at the end of Year 12 in preparation for the A Level.

Progression – What can I do at the end of the course?

Music is recognised by universities as an academic A-level and provides a good step towards degrees in a wide range of subject areas, including sciences, mathematics, languages, humanities and the arts. It is a requirement to have passed A Level music for most Higher Education music courses, but is also considered a valuable subject to take for entry other degree courses.

Minimum Requirements

Grade C or above at GCSE. Candidates must be having lessons on their chosen instrument. Candidates are expected to participate in Music Department activities. Some understanding of the rudiments of theory is needed for this course. Working at a Grade 5 level is very helpful.



What will you do?

You will be working as a recording studio engineer within your class to enhance your composition, production, and listening skills. You will develop an understanding of production tools and techniques to capture, edit, process and mix an audio recording as well as creating, manipulating and structuring sounds to produce technology-based compositions.

Who is the course for?

Anyone who has a keen interest in creating and listening to different styles of music, alongside some pre-existing skills and knowledge, and who wishes to broaden their experience and deepen their understanding of music production technology would be suitable for this course

A LEVEL

Examination Board:

EDEXCEL/PEARSON

Specification:

Music Technology

AS Level		A2 Level	
Unit	Title	Unit	Title
Component 1	Recording (20%): In this unit you use production tools and techniques to capture, edit process and mix an audio recording.	Component 1	Recording (20%): Development and extension of knowledge for AS level. Assessed by a practical piece of coursework.
Component 2	Technology based Composition (20%): In this unit you create, edit, manipulate and structure sounds to produce a technology based composition.	Component 2	Technology based Composition (20%): You must produce one composition based on a brief which must total 3 minutes and be accompanied by a log book and authentication form.
Component 3	Listening and Analysing (25%) code: This is a 1 hour 15-minute written exam consisting of 2 sections and relating to all 3 areas of study.	Component 4	Listening and Analysing (25% of the qualification) : This 1 hour 30-minute written examination made up of 2 sections and relating to all 3 areas of study.
Component 4	Producing and Analysing (35%) code: In this unit you gain knowledge and understanding of editing and mixing production techniques, which is assessed in a written exam.	Component 4	Producing and Analysing (35% of the qualification): This exam requires the application of knowledge related to two areas of study: recording and production techniques for both corrective and creative purposes and principles of sound and audio technology.

Assessment and Feedback

The course is entirely assessed through graded coursework assignments. These are set throughout both years, and marked regularly with detailed feedback from the teacher. You are then given the opportunity to refine and improve this work, thus improving your grade.

Progression – What can I do at the end of the course?

Students can progress from this qualification to:

- music schools and university courses that relate to music technology
- university courses that will benefit from the skills acquired from this GCE
- employment where music technology skills are essential, for example trainee producer or engineer, studio manager

Minimum Requirements

There are no prior learning or other requirements for this qualification. Students who would benefit most from studying this qualification are likely to have a Level 2 qualification such as a GCSE in Music.

Philosophy and Ethics

A LEVEL
Examination Board:
OCR
Specification:

Religious Studies (Philosophy and Ethics) H173, H573.



What will I need before taking this course?

An interest in questioning unanswerable questions about life, death and the universe (philosophy) and the thirst to understand how we come to recognise what is morally wrong or morally right (ethics). You will need to be a quick and deep thinker. You will need to be able to apply the arguments of famous scholars like Plato and Aristotle as well as generate your own views. Finally, you will need excellent abilities in literacy to be able to convey your knowledge and understand through written examination.

What will you do?

You will be preparing for three examinations in Year 12 and three in Year 13. You will learn through a variety of lesson activities including; group work, independent research, debate, peer teaching, oral presentation, problem solving games and exam technique workshops.

Who is the course for?

Anyone! It requires a lot of reading and writing but also a lot of discussion. We touch on political, social, moral, spiritual and cultural issues as well as philosophy and ethics itself. It is a subject for Atheists, Agnostics and Theists who feel passionate about life, death and the universe.

AS Level		A2 Level	
Unit	Title	Unit	Title
1	Philosophy of religion 60 marks - 33% of total AS Level 1 hour written paper	1	Philosophy of religion 120 marks - 33% of total A Level 2 hour written paper
2	Religion and ethics 60 marks - 33% of total AS Level 1 hour written paper	2	Religion and ethics 120 marks - 33% of total A Level 2 hour written paper
3	Developments in religious (Christian) thought 60 marks - 33% of total AS Level 1 hour written paper	3	Developments in religious (Christian) thought 120 marks - 33% of total A Level 2 hour written paper

Assessment and Feedback

In Philosophy and Ethics you will consistently use skills including; analysis, evaluation, critical thinking, problem solving, research, communication and more! This means that Philosophy and Ethics students are specialising in a fantastic subject whilst maintaining transferable skills for any future career or higher education.

You will:

- Understand scholarly views towards philosophical and ethical issues
- Investigate how to apply scholarly theories to modern moral dilemmas e.g. business, environment, abortion, sex.
- Analyse texts from a wide variety of scholars
- Construct your own persuasive arguments
- Debate and discuss philosophical and ethical issues

Lessons include a mixture of text analysis, video analysis, debate, discussion, critical thinking, essay structure and writing style coaching.

Progression – What can I do at the end of the course?

Careers using Philosophy and Ethics include; advertising, PR and communications, media, journalism, publishing, politics, teaching, law, medicine, social work, event management, marketing, working with charities and much more. Philosophy and Ethics is a highly regarded academic subject. It is traditional enough to be highly respected by employers and universities but modern enough to engage with people of any age. You would have to study two or three A Levels to test the number of skills found in Philosophy and Ethics, and these are skills for life.

Minimum Requirements

C grade in English and/ or a C grade in Religious Studies (Philosophy and Ethics GCSE).

A LEVEL

Examination Board:

AQA

Specification:

A/S (1581) and A level PE
(2581)

Physical Education

What will I need before taking this course?

- An interest in sport is vital with high performance levels in sport as a performer, coach or official
- The ability to work well independently and as part of a team
- High organisational skills - lots of different units with different teachers
- Time management – the ability to manage work load and meet deadlines

What will you do?

Unit 1- two hour written examination. Topics include: Health, exercise and fitness, Nutrition, Cardio-respiratory system, Analysis of movement, Levers, Information processing, Learning and performance, Opportunities for participation, Provision of sport, Increasing participation levels, Barriers to participation

Unit 2 - Practical coursework. In one sport you will be assessed on your performance in practice situations in two out of the following three roles: Performer, Coach, and Official

Unit 3 - two hour written examination. Topics include: Energy systems, Training, Sports injuries, Mechanics of movement, Personality, Anxiety, Attitude, Aggression, Confidence, Groups, Leadership, World games, World class performance, Achieving excellence, History of sport, Deviance in sport, Commercialisation of sport

Unit 4 – Coursework. In one sport you will be assessed on your performance in a competitive situation as a performer, official or a coach. There is also a written element that involves analysing performance.

AS Level		A2 Level	
Unit	Title	Unit	Title
1	Unit 1 – PHED1 Opportunities for and the effects of leading a healthy and active lifestyle	3	Unit 3 – PHED3 Optimising performance and evaluating contemporary issues within sport
2	Unit 2 – PHED2 Analysis and evaluation of physical activity as a performer and/or in an adopted role	4	Unit 4 – PHED4 Optimising practical performance in a competitive situation

All students will sit a standalone AS qualification as part of preparation for the final A2 exam.

Assessment and Feedback

AS Written examination 60% Practical coursework 40%. A2 Written examination 60% Practical coursework 40%

Progression – What can I do at the end of the course?

Teacher, sports physiotherapist, sports nutritionist, sports psychologist, analyst.

Minimum Requirements

You will have completed the BTEC 1st in Sport to a distinction standard

You will have a C grade or above in English

You will have a C grade or above in Science

Physical Education (Cambridge Technicals)



LEVEL 3

Examination Board:

OCR

Specification:

Diploma 05829

What will I need before taking this course?

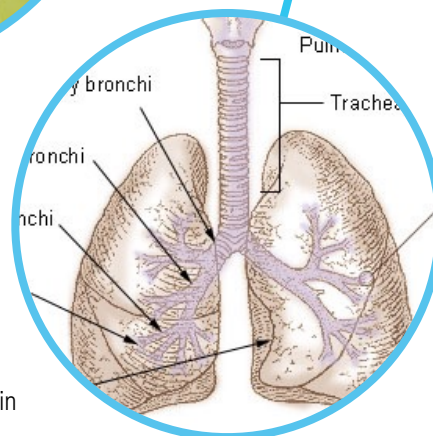
You will have either completed a Level 2 BTEC in Physical Education or GCSE Physical education

What will you do?

Students will complete three externally moderated units which are exam based and involve a written paper being completed. All other units will then be internally moderated whereby students complete coursework assignments on computers

Who is the course for?

Anyone who has a keen interest in Physical education and exercise. Students considering a career in sport or nutrition.



A Level

Unit	Title	Unit	Title
1	Body system and the effects of physical activity (90)	17	Sports injuries and rehabilitation (60)
2	Sports coaching and activity leadership (90)	18	Physical skills in sport and physical activities (60)
3	Sport organisation and development (60)	11	Physical activity for specific groups (30)
4	Working safely in sport, exercise, health and leisure (90)	19	Sport and exercise psychology
5	Performance analysis in sport and leisure (60)	7	Improving fitness for sport and physical activity
8	Organisation of sports events (60)	12	Nutrition and diet for sport and exercise

The work covered in Year 12 forms 50% of the 2 year qualification. The grade achieved is dependent on the number of points accumulated over the units.

Assessment and Feedback

Students are taught the content needed to complete the assignments independently in the internal units. Feedback is provided through tracking and completion of unit sheets. For the external units students are taught the theory aspects and complete past paper questions etc, in preparation for written based exam.

Progression – What can I do at the end of the course?

Students who are interested in pursuing a career in sport and wanting to go university. Careers can be linked to sports coaching, working in leisure centres, PE teaching etc.

Minimum Requirements

You will have completed either Level 2 BTEC in Physical Education or GCSE Physical education courses



A LEVEL

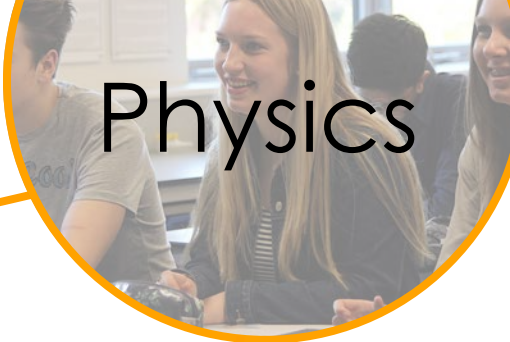
Examination Board:

AQA

Specification:

AS Physics 7407

A Level Physics 7408



What will I need before taking this course?

Two grade B GCSEs in Science, a grade B in mathematics and a grade C GCSE in English.

What will you do?

A Level Physics is about discovery of the way the universe works as well as developing your skills to think logically and concisely to explain scientific ideas. Practical science plays a large role in this new specification with 12 core practical tasks to be studied throughout the course. You will look at the key areas of physics particles, waves, energy, forces, fields and electricity.

Who is the course for?

This course has been designed by AQA in consultation with major universities so that it prepares students to progress onto prestigious university level Science courses. This course is perfect for anyone with a logical, mathematical and inquisitive brain who would like to know more about how the universe works. Aspiring doctors, engineers, computer scientists, programmers, architects and designers should consider this course.

AS Level		A2 Level	
Topic	Title	Topic	Title
1	Measurements and their errors	6	Further mechanics and thermal physics
2	Particles and radiation	7	Fields and their consequences
3	Waves	8	Nuclear physics
4	Mechanics and materials	9	One option from: Astrophysics, Medical physics, Engineering physics, Turning points, Electronics
5	Electricity		

All students will sit a standalone AS qualification as part of preparation for the final A2 exam.

Assessment and Feedback

Throughout each topic and at the conclusion of each topic you will be assessed using a range of accessible but rigorous methods. You will have access to regular interactive progress checks that will develop your exam technique. You will then complete an exam-style assessment at the end of each topic to provide you with a realistic picture of your progress towards your end of course exams.

Feedback is given in writing and verbally and will be provided for all assessments. This is alongside regular marking of your classwork and learning conversations between teacher and student.

Progression – What can I do at the end of the course?

Upon completion of an A Level in Physics there are a number of options you can pursue. These include, but are not limited to, a degree within the natural sciences, medicine, engineering, architecture, computer science and mathematics. An A Level in Physics is also an excellent choice for almost any University course. Physics is held in very high esteem by all institutions and it will not limit your options in the future.

Minimum Requirements

To succeed on this course you will need two B grades in Science from either Double Award (Science A & Additional Science) or Triple Award Science (Science A, Additional Science & Further Additional Science). You will also need a C grade in English. A B grade in Maths is also required since 40% of the course will examine mathematical skills.



Product Design



A LEVEL

Examination Board:
OCR

Specification:
H053 & H453



What will I need before taking this course?

A GCSE in one of the technology subjects at C or above and an interest in creative problem solving.

What will you do?

This course is designed to encourage students to:

- initiate design solutions, develop, test and trial working models and prototypes;
- develop and sustain imagination, innovation and flair when working with concepts and materials;
- develop an understanding of contemporary design and technological practices and consider the uses and effects of new technologies and modern materials;
- develop thinking skills, financial capability, enterprise and entrepreneurial skills.

AS

F521: Advanced Innovation Challenge. Candidates take part in a timed design challenge based on a pre-released theme, under examination conditions. The challenge consists of a design, and modelling exercise recorded in a workbook. A written reflection paper is completed at a later date. The challenge and reflection paper are held in the centre and are marked externally by OCR.

F522: The Product Study. Candidates should carry out an in-depth product analysis resulting in suggestions for improvements. This is a coursework component that is marked by the teacher, internally standardised within the centre and externally moderated by OCR.

A2

In F523: Design, Make and Evaluate, candidates are required to produce a portfolio and product. The project is marked by the teacher, internally standardised within the centre and externally moderated by OCR.

F524: Product Design is a written paper that consists of two components. Candidates are able to select questions across the focus material areas if they wish..

Who is the course for?

All students who are creative and enjoy problem solving. Students who want a career in Design.

AS Level		A2 Level	
Unit	Title	Unit	Title
1	F521: Advanced Innovation Challenge	3	F523: Design, Make and Evaluate,
2	F522: The Product Study.	4	F524: Product Design

All students will sit a standalone AS qualification as part of preparation for the final A2 exam.

Assessment and Feedback

The course is delivered using a variety of types of activity. Coursework is followed in a way very similar to that used at GCSE following a time plan with deadlines and regular review using individual tutorials. The theoretical content will be delivered through some formal instruction, research assignments and product analysis involving group discussions. The coursework and theory are taught by two teachers across both years; AS and A2.

Progression – What can I do at the end of the course?

A Product Design course is ideal for students to progress onto a variety of different pathways of an academic or vocational nature such as; research and development, design, industrial manufacturing and marketing, or indeed employment and apprenticeships, as the course is designed to meet employer’s needs in the 21st century by developing skills such as liaising with a client, working within a timescale and budget, setting milestones and meeting deadlines, prioritising resources and teamwork. Careers directly linked include; engineering, architecture, marketing, advertising, food science, fashion design, graphic design, product design and industrial design

Minimum Requirements

It is preferable for students to have achieved a B or above in a Design Technology GCSE to follow this course but students have successfully moved over from art and taken up A Level Product Design.

A LEVEL

Examination Board:

AQA

Specification:

7181; 7182



Psychology

What will I need before taking this course?

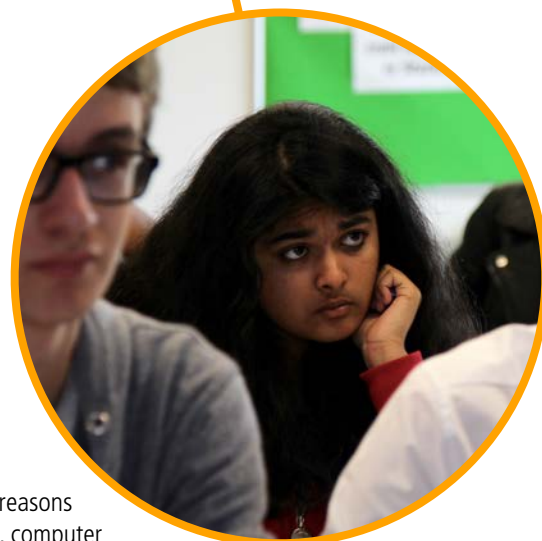
An interest in understanding the complexities of human behaviour, a critical mind-set and a desire to explore psychological research across a range of topics. A basic understanding of our physiology and statistical analysis will be useful as several topics focus on the body's response and the significance of data collected from psychological research.

What will you do?

You will be preparing for examinations in a range of disciplines within Psychology including social, cognitive, developmental and biological Psychology, in addition to exploring how psychological research is conducted and assessed.

Who is the course for?

Psychology is a course for students who are inquisitive, analytical and interested in exploring the reasons behind human behaviour. If you wish to work within a variety of disciplines such as the biological, computer and forensic sciences, humanities or education then this is the course for you. This is a two year course with 100% examination at the end of the course.



AS Level		A2 Level	
Unit	Title	Unit	Title
1	Introductory Topics In Psychology (Exam)	1	Introductory Topics In Psychology (Exam)
2	Psychology In Context (Exam)	2	Psychology In Context (Exam)
		3	Issues & Options In Psychology (Exam)

All students will sit a standalone AS qualification as part of preparation for the final A2 exam.

Assessment and Feedback

Examination lessons: Students will receive written feedback on homework every week, formal assessment approximately every two to three weeks and verbal feedback every lesson. Students will take the AS exam at the end of Y12 but the grade achieved in this will be replaced by the final A level grade and will not be counted towards it. This allows you, the student, to have your progress externally checked by the exam board at the half way point of the course.

Progression – What can I do at the end of the course?

Students can go on to study a variety of courses at university or work in several disciplines such as social care, mental health, education, business, military, law, forensics, counselling, media, aviation, research, careers and sports.

Many psychologists also work in applied settings such as ergonomics and human factors. Psychologists are well suited to work in business, government, education and mental health. This A Level can get you into many degree courses.

Minimum Requirements

- GCSE in Science at grade C or higher
- GCSE English at grade C or higher
- GCSE Maths at grade C or higher

Sociology

A LEVEL

Examination Board:

AQA

Specification:

7192



What will I need before taking this course?

A GCSE grade C in English and a desire to understand the complexities of human behaviour and society.

What will you do?

Sociology is a social science studying the patterns of, and reasons for, human behaviour, social organisation and culture. Sociology helps us to explore and understand the society in which we live and how its various elements fit together and influence each other. It is a subject that combines scientific methodology and humanities based investigation to allow Sociologists to understand what drives and creates change in our cultural norms.

Throughout the two year course you will explore topics including "Who commits crime and why?", "Is education a way of controlling the working classes?", "Are families no longer important?" and "Why might girls outperform boys in education?". Your lessons will include a series of debates, analysing and manipulating scientific research, examining case studies and carrying out investigations.

Who is the course for?

The course is literacy rich and ideally you would need to be comfortable with writing your answers in an extended format, using evidence. You would also need to enjoy having lively debate about controversial ideas and working with others.



AS Level		A2 Level	
Unit	Title	Unit	Title
1	Families and Households	1	Beliefs in Society
2	Education and Research methods	2	Crime and Deviance with theory and methods

Assessment and Feedback

Sociology students will receive regular and detailed feedback on a range of homework, essays, exam questions and learning tasks. This will be both written and verbal and will allow you to be secure in your attainment and progress.

This is a two year course with 100% examination at the end of the course. Students will take the AS exam at the end of Y12 but the grade achieved in this will be replaced by the final A Level grade and will not be counted towards it. This allows you, the student, to have your progress externally checked by the exam board at the half way point of the course.

Progression – What can I do at the end of the course?

An A Level in Sociology can lead to a plethora of careers including jobs in advertising, media, journalism, careers guidance, social services, the police and teaching amongst many others. It can also lead to a wide range of degree level subjects. A qualification in the subject will also tell employers that you are a person who can debate a passionate subject, understand demographics and deal with difficult situations in an empathetic and level headed way.

Minimum Requirements

A minimum of a GCSE grade C in either English language or literature.

AS LEVEL

Examination Board:

AQA

Specification:

Level 3 Extended Project
Qualification (7993)

Extended Project Qualification (EPQ)

What will I need before taking this course?

At least 8 GCSEs at A*- C including at least a grade B in GCSE English and Maths and preferably Sciences.

What will you do?

This is a Level 3 Qualification equivalent to half an A Level. It has some taught elements that include research skills, referencing, report writing etc. It also requires a large amount of independent project work and regular meetings with your supervisor.

- Choose an area that interests you
- Draft a title and aims of the project for formal approval
- Plan, research and carry out the project
- Deliver a presentation to a specified audience
- Provide evidence of all stages of project development and production for assessment

All projects must include a written report of between 1000 and 5000 words.

A project which consists solely of written work should be approximately 5000 words; projects where the majority of the evidence is provided in other formats should include a report which is at least 1000 words.

Who is the course for?

- Students who want to develop and evidence the key skills that Russell Group and other top universities and employers demand in candidates
- Students who have a passion for an area that they want to explore in depth
- The course relates to a wide range of A Levels such as sociology, media, the arts, government and politics, law, philosophy and ethics as well as the sciences. The course also has a topical basis, so a particular interest in current affairs will be an advantage.

Assessment and Feedback

Students will have their project reviewed at certain points by their Supervisor. The evidence for final assessment will comprise the following:

- the completed Production Log and Assessment Record including the Project Proposal Form, Presentation Record and Candidate Record Form
- the project product including a written report and any other evidence, as appropriate, depending on the topic or subject area chosen

Progression – What can I do at the end of the course?

The course gives additional UCAS points and is accepted by almost all universities. As it is excellent evidence of key skills, some universities reduce their UCAS offers to students who achieve the EPQ at a high grade.

Minimum Requirements

At least 8 GCSEs at A*- C including English and Maths at B grade or above.



Kettering Buccleuch Academy
Weekley Glebe Road
Kettering
NN16 9NS

01536 515644

www.kba.uk

